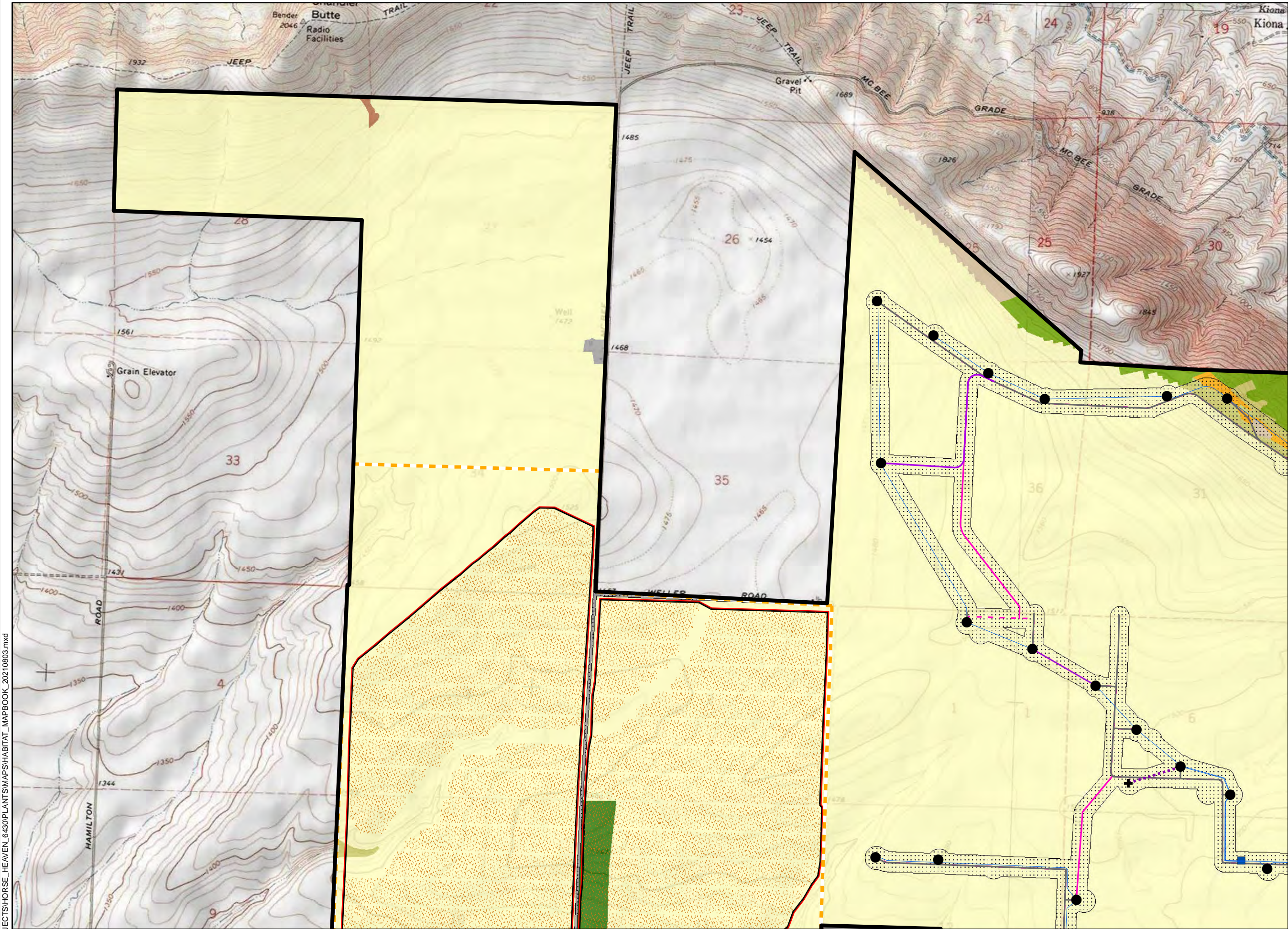


R:\PROJECTS\HORSE HEAVEN\_6430\PLANTMAPS\HABITAT\_MAPBOOK\_20210803.mxd



# Horse Heaven Wind Project



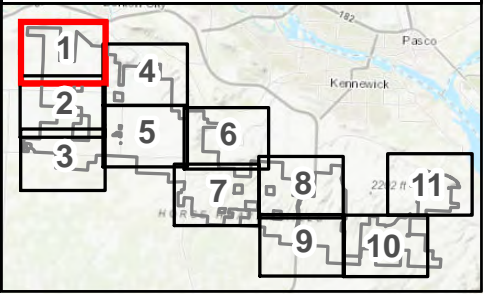
Preliminary Draft - for review  
**Habitat Types and Subtypes**  
Map 1 of 11  
BENTON COUNTY, WA

- Project Lease Boundary
- Wind Energy Micrositing Corridor
- Option 1 Turbine Layout
- Met Tower
- Met Tower Access Road
- Solar Siting Area
- Solar Array
- Solar Array Fencing
- Solar Array Road
- Junction Box
- Collection Line
- CraneCL
- CraneCL\_OnRoad
- CraneCL\_Alt
- RoadCL
- RoadCL\_Alt

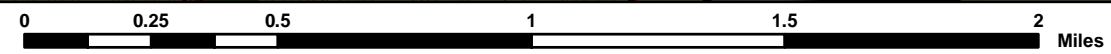
## Habitat Types and Subtypes

- Agricultural land
- Developed/disturbed
- Grassland**
  - Non-native Grassland
  - Planted Grassland
  - Unclassified Grassland
- Shrubland**
  - Dwarf Shrub-steppe
  - Sagebrush Shrub-steppe
  - Unclassified Shrubland

## Reference Map



1:24,000 WGS 1984 UTM Zone 11N



NOT FOR CONSTRUCTION





Horse Heaven Wind Project



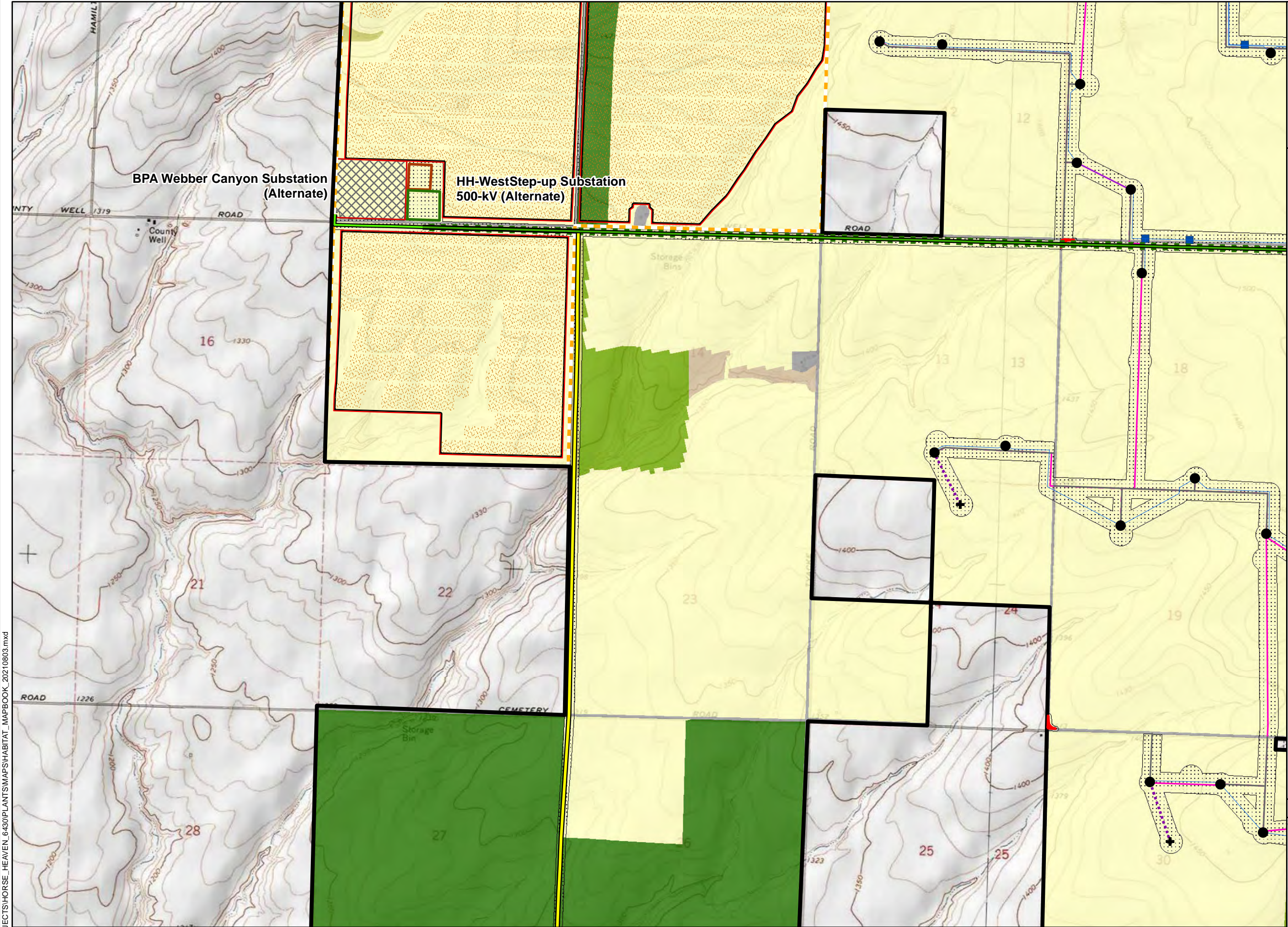
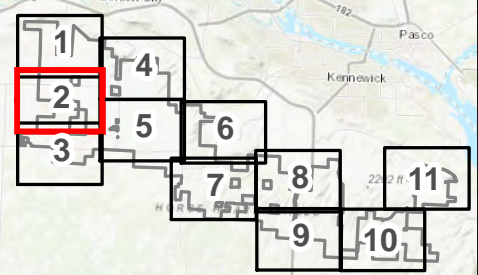
Preliminary Draft - for review  
**Habitat Types and Subtypes**  
Map 2 of 11  
BENTON COUNTY, WA

- Project Lease Boundary
- Wind Energy Micrositing Corridor
- Option 1 Turbine Layout
- Met Tower
- Met Tower Access Road
- Solar Intertie 230-kV Transmission Line
- County Well Road 230-kV Transmission Line (Primary)
- County Well Road 500-kV Transmission Line Step-up (Primary)
- Battery Storage
- Intersection Improvement Area
- Project Substation (Alternate)
- Solar Siting Area
- Solar Array
- Solar Array Fencing
- Solar Array Road
- BPA Substation (Alternate)
- Junction Box
- Collection Line
- CraneCL
- CraneCL\_OnRoad
- RoadCL

**Habitat Types and Subtypes**

- Agricultural land
- Developed/disturbed
- Grassland**
  - Non-native Grassland
  - Planted Grassland
  - Unclassified Grassland
- Shrubland**
  - Sagebrush Shrub-steppe
  - Unclassified Shrubland

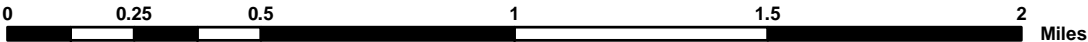
Reference Map



R:\PROJECTS\HORSE\_HEAVEN\_6430\PLANT\MAPS\HABITAT\_MAPBOOK\_20210803.mxd



1:24,000 WGS 1984 UTM Zone 11N

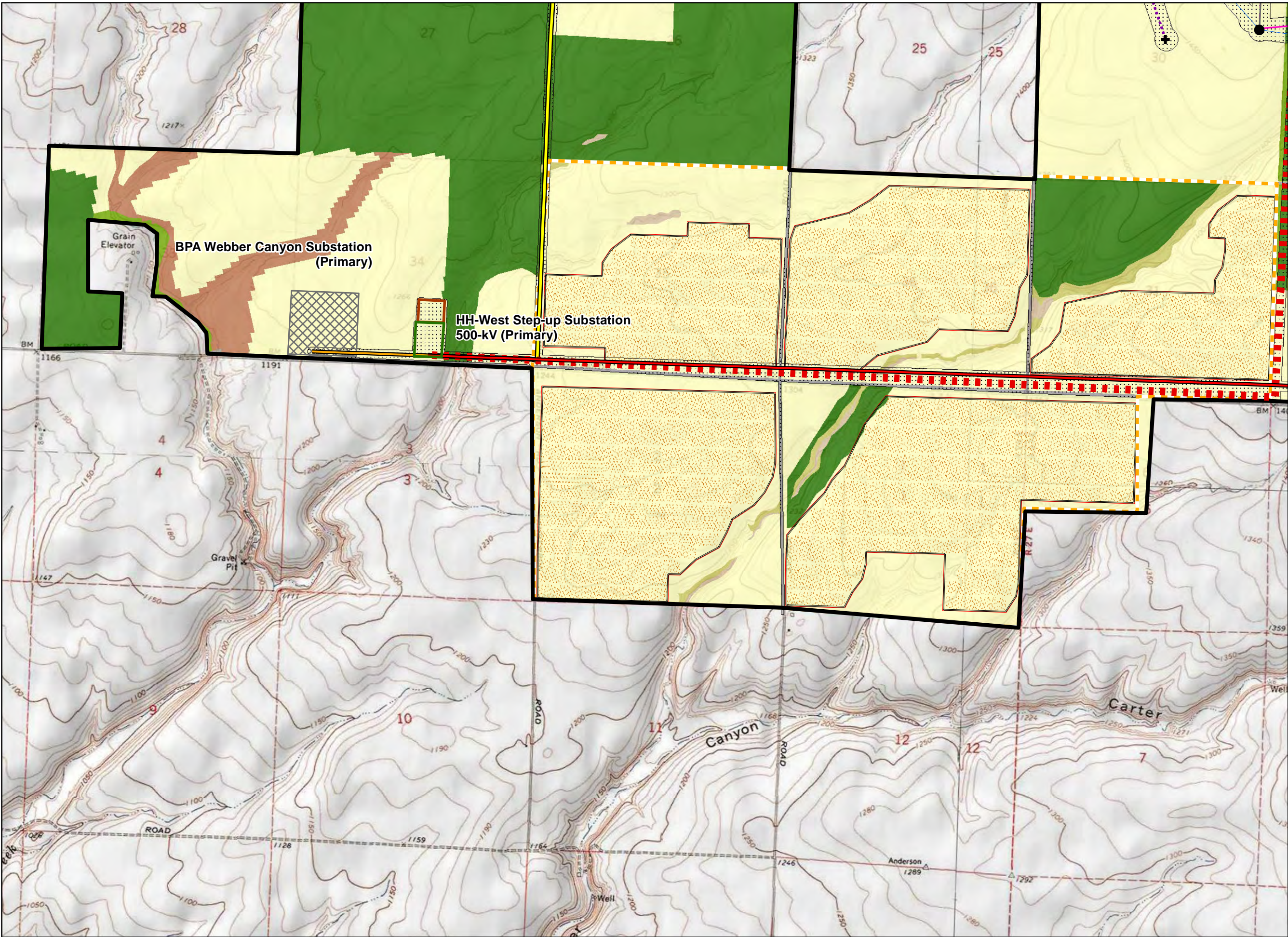


NOT FOR CONSTRUCTION





R:\PROJECTS\HORSE HEAVEN\_6430\PLANT\MAPS\HABITAT\_MAPBOOK\_20210803.mxd



# Horse Heaven Wind Project



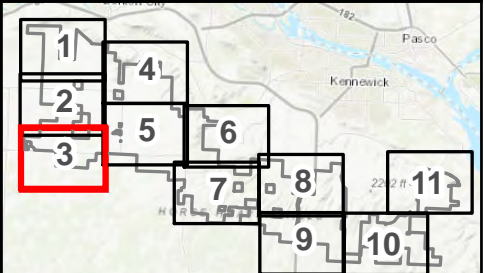
Preliminary Draft - for review  
**Habitat Types and Subtypes**  
Map 3 of 11  
BENTON COUNTY, WA

- Project Lease Boundary
- Wind Energy Micrositing Corridor
- Option 1 Turbine Layout
- Met Tower
- Met Tower Access Road
- Sellards Road 230-kV Transmission Line (Primary)
- Sellards Road 500-kV Transmission Line Step-up (Primary)
- Sellards Road 230-kV Transmission Line (Alternate)
- Solar Intertie 230-kV Transmission Line
- Battery Storage
- Project Substation (Alternate)
- Solar Siting Area
- Solar Array
- Solar Array Fencing
- Solar Array Road
- Collection Line
- CraneCL
- CraneCL\_OnRoad
- RoadCL

## Habitat Types and Subtypes

- Agricultural land
- Developed/disturbed
- Grassland**
  - Non-native Grassland
  - Planted Grassland
  - Unclassified Grassland
- Shrubland**
  - Sagebrush Shrub-steppe
  - Unclassified Shrubland

## Reference Map



1:24,000 WGS 1984 UTM Zone 11N

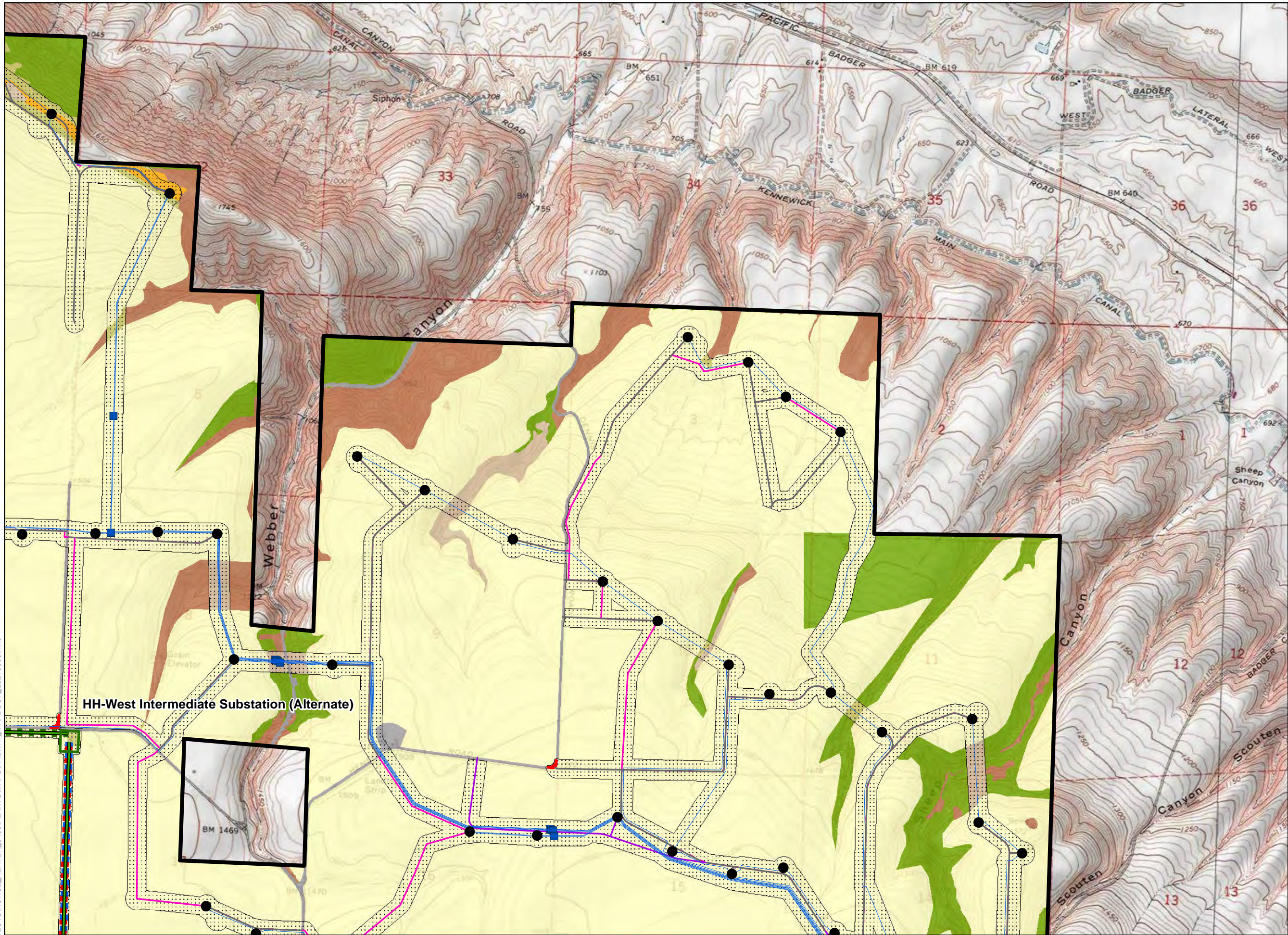
0 0.25 0.5 1 1.5 2 Miles

NOT FOR CONSTRUCTION





R:\PROJECTS\HORSE\_HEAVEN\_6430\PLANT\MAPS\HABITAT\_MAPBOOK\_20210803.mxd



# Horse Heaven Wind Project



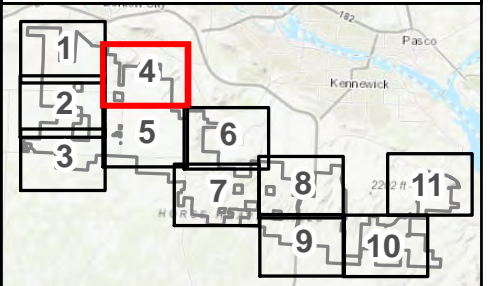
Preliminary Draft - for review  
**Habitat Types and Subtypes**  
Map 4 of 11  
BENTON COUNTY, WA

- Project Lease Boundary
- Wind Energy Micrositing Corridor
- Option 1 Turbine Layout
- Sellards Road 230-kV Transmission Line (Alternate)
- County Well Road 230-kV Transmission Line (Primary)
- Intersection Improvement Area
- Project Substation (Alternate)
- Junction Box
- Collection Line
- CraneCL
- CraneCL\_OnRoad
- CraneCL\_OnRoad\_Alt
- RoadCL
- RoadCL\_Alt

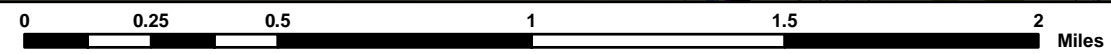
## Habitat Types and Subtypes

- Agricultural land
- Developed/disturbed
- Grassland**
  - Non-native Grassland
  - Unclassified Grassland
- Shrubland**
  - Dwarf Shrub-steppe
  - Sagebrush Shrub-steppe
  - Unclassified Shrubland

## Reference Map



1:24,000 WGS 1984 UTM Zone 11N



NOT FOR CONSTRUCTION





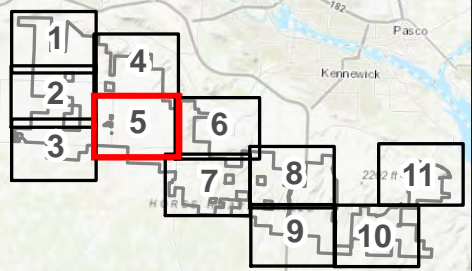
Horse Heaven Wind Project



Preliminary Draft - for review  
**Habitat Types and Subtypes**  
Map 5 of 11  
BENTON COUNTY, WA

- Project Lease Boundary
- Wind Energy Micrositing Corridor
- Option 1 Turbine Layout
- Met Tower
- Met Tower Access Road
- Sellards Road 230-kV Transmission Line (Primary)
- Sellards Road 230-kV Transmission Line (Alternate)
- County Well Road 230-kV Transmission Line (Primary)
- 230-kV Intertie Transmission Line (Primary)
- O & M Facility
- Intersection Improvement Area
- Laydown Yard
- Project Substation (Primary)
- Solar Siting Area
- Solar Array
- Solar Array Fencing
- Solar Array Road
- Junction Box
- Collection Line
- CraneCL
- CraneCL\_OnRoad
- CraneCL\_Alt
- CraneCL\_OnRoad\_Alt
- RoadCL
- RoadCL\_Alt
- Habitat Types and Subtypes**
- Agricultural land
- Developed/disturbed
- Grassland**
- Non-native Grassland
- Planted Grassland
- Unclassified Grassland
- Shrubland**
- Sagebrush Shrub-steppe
- Unclassified Shrubland

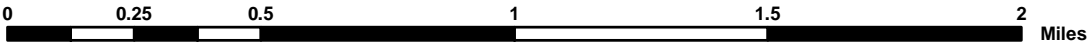
Reference Map



R:\PROJECTS\HORSE HEAVEN 6430\PLANT\MAPS\HABITAT MAPBOOK\_20210803.mxd



1:24,000 WGS 1984 UTM Zone 11N



NOT FOR CONSTRUCTION





Horse Heaven Wind Project



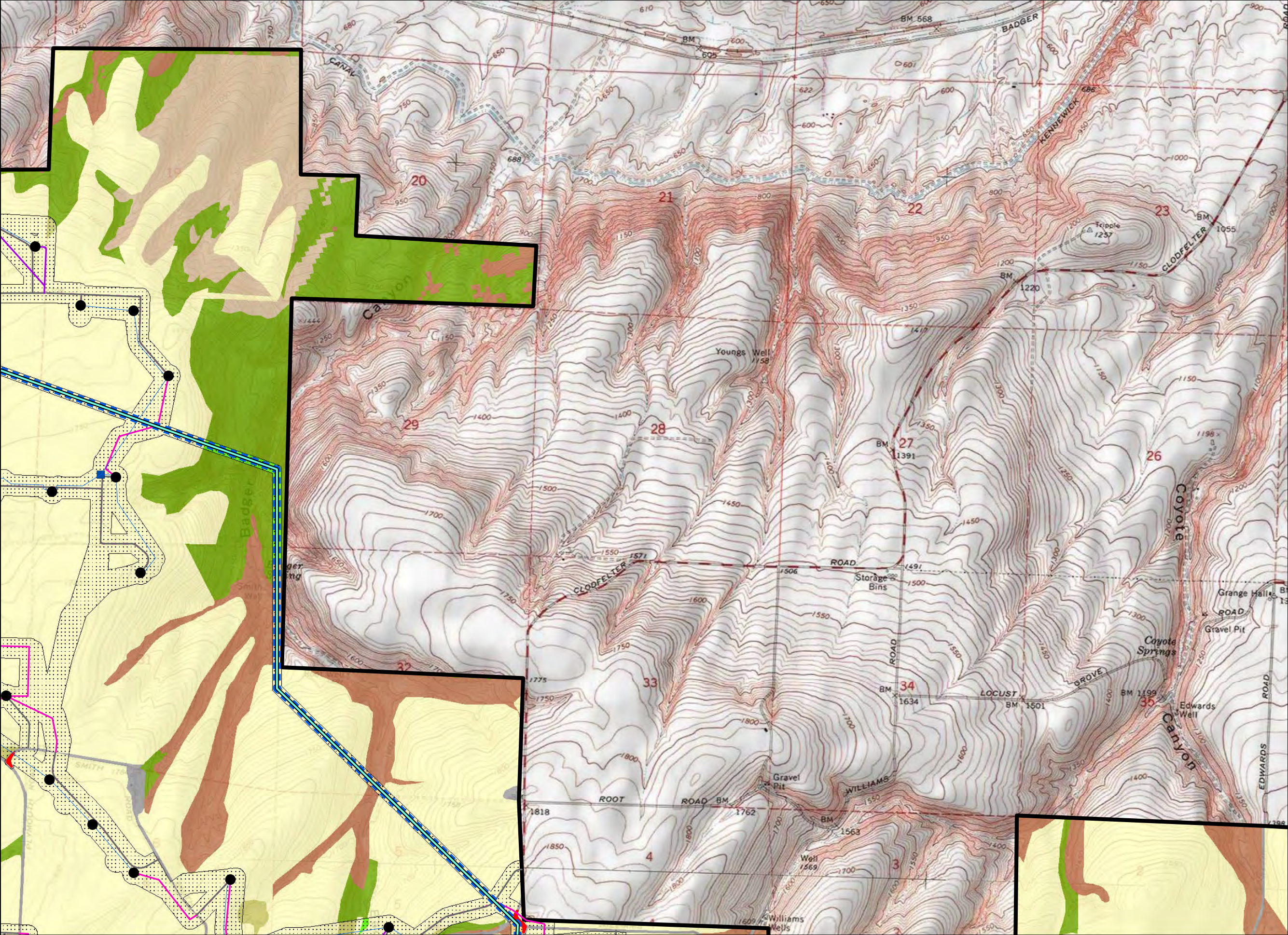
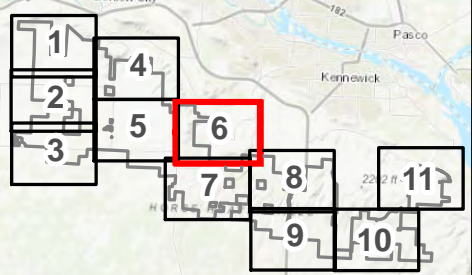
Preliminary Draft - for review  
**Habitat Types and Subtypes**  
Map 6 of 11  
BENTON COUNTY, WA

- Project Lease Boundary
- Wind Energy Micrositing Corridor
- Option 1 Turbine Layout
- 230-kV Intertie Transmission Line (Primary)
- Intersection Improvement Area
- Junction Box
- Collection Line
- CraneCL
- CraneCL\_OnRoad
- CraneCL\_OnRoad\_Alt
- RoadCL
- RoadCL\_Alt

**Habitat Types and Subtypes**

- Agricultural land
- Developed/disturbed
- Grassland**
  - Eastside (Interior) Grasslands
  - Non-native Grassland
  - Unclassified Grassland
- Shrubland**
  - Rabbitbrush Shrubland
  - Sagebrush Shrub-steppe
  - Unclassified Shrubland

Reference Map



R:\PROJECTS\HORSE\_HEAVEN\_6430\PLANT\MAPS\HABITAT\_MAPBOOK\_20210803.mxd



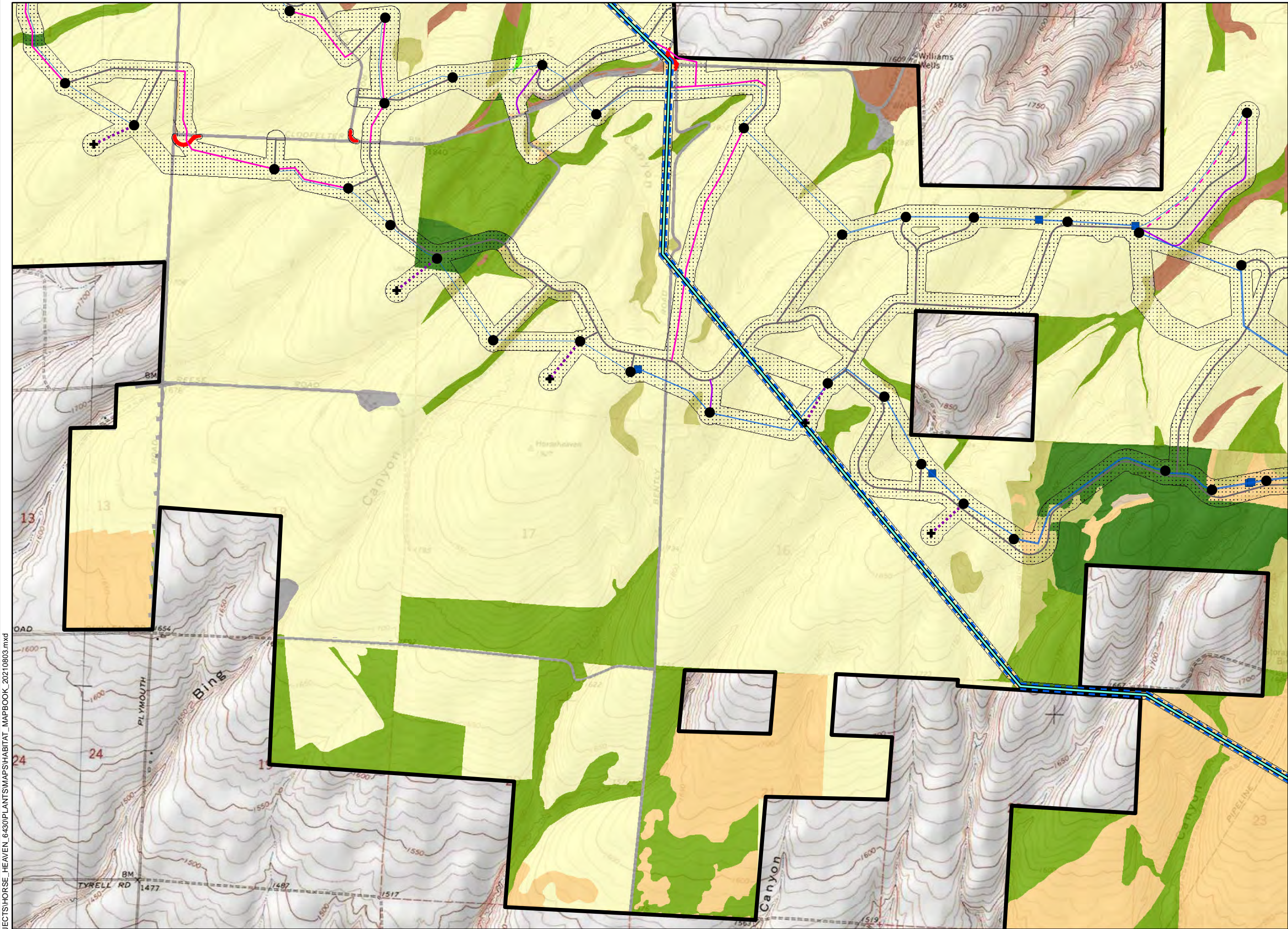
1:24,000 WGS 1984 UTM Zone 11N

0 0.25 0.5 1 1.5 2 Miles

NOT FOR CONSTRUCTION







Horse Heaven Wind Project



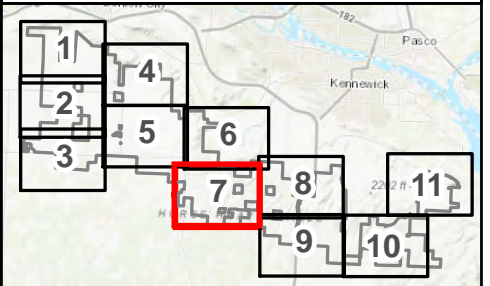
Preliminary Draft - for review  
**Habitat Types and Subtypes**  
Map 7 of 11  
BENTON COUNTY, WA

- Project Lease Boundary
- Wind Energy Micrositing Corridor
- Option 1 Turbine Layout
- Met Tower
- Met Tower Access Road
- 230-kV Intertie Transmission Line (Primary)
- Intersection Improvement Area
- Junction Box
- Collection Line
- CraneCL
- CraneCL\_OnRoad
- CraneCL\_OnRoad\_Alt
- RoadCL
- RoadCL\_Alt

Habitat Types and Subtypes

- Agricultural land
- Developed/disturbed
- Grassland**
  - Eastside (Interior) Grasslands
  - Non-native Grassland
  - Planted Grassland
  - Unclassified Grassland
- Shrubland**
  - Rabbitbrush Shrubland
  - Sagebrush Shrub-steppe
  - Unclassified Shrubland

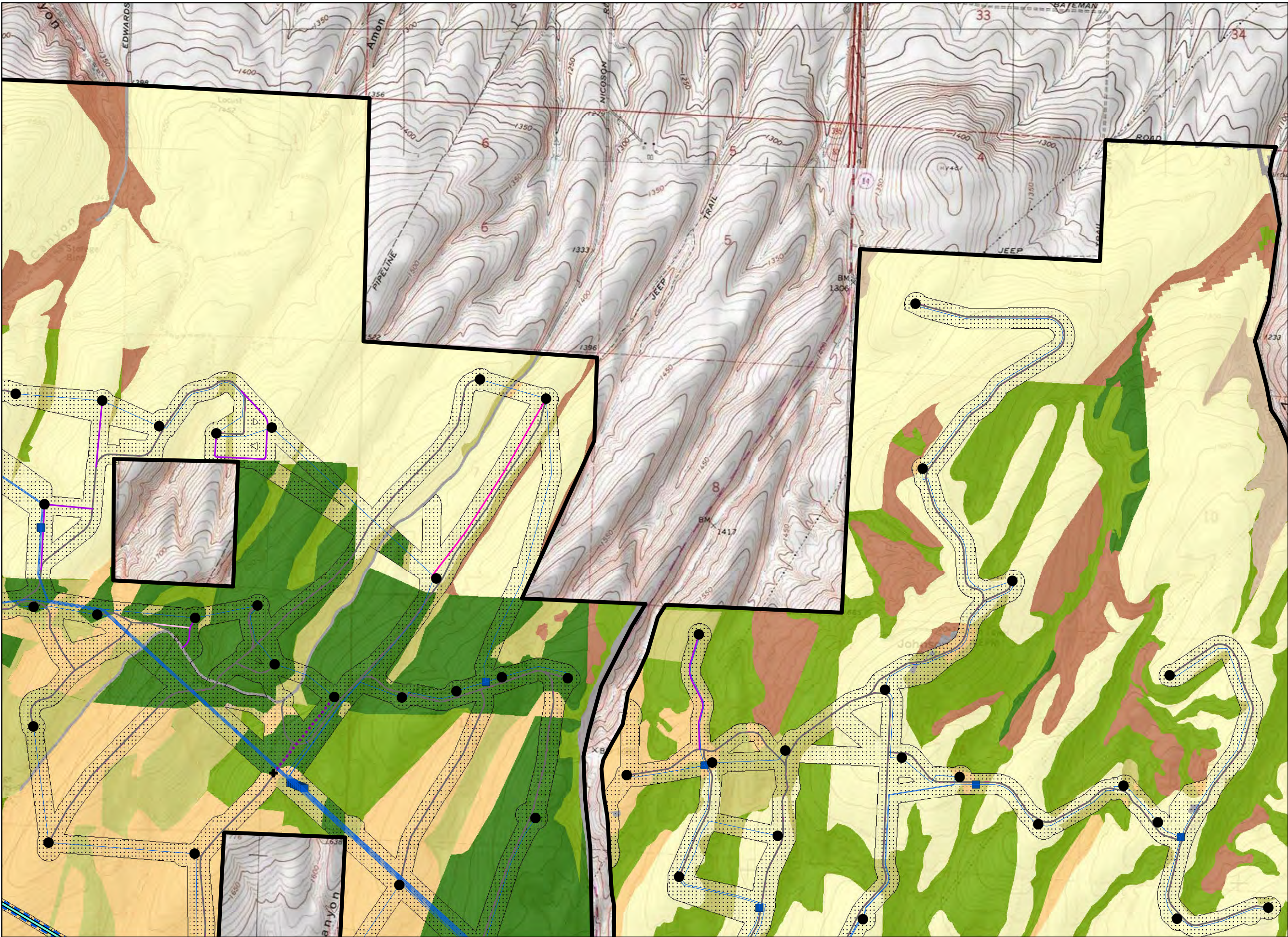
Reference Map



R:\PROJECTS\HORSE HEAVEN\_6430\PLANTSMAP\HABITAT\_MAPBOOK\_20210803.mxd



R:\PROJECTS\HORSE HEAVEN\_6430\PLANT\MAPS\HABITAT\_MAPBOOK\_20210803.mxd



# Horse Heaven Wind Project



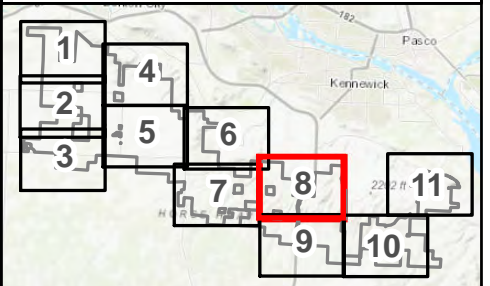
Preliminary Draft - for review  
**Habitat Types and Subtypes**  
Map 8 of 11  
BENTON COUNTY, WA

- Project Lease Boundary
- Wind Energy Micrositing Corridor
- Option 1 Turbine Layout
- Met Tower
- Met Tower Access Road
- 230-kV Intertie Transmission Line (Primary)
- Junction Box
- Collection Line
- CraneCL
- CraneCL\_OnRoad
- CraneCL\_Alt
- CraneCL\_OnRoad\_Alt
- RoadCL
- RoadCL\_Alt

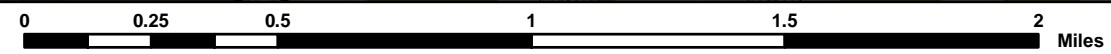
## Habitat Types and Subtypes

- Agricultural land
- Developed/disturbed
- Grassland**
  - Non-native Grassland
  - Planted Grassland
  - Unclassified Grassland
- Shrubland**
  - Rabbitbrush Shrubland
  - Sagebrush Shrub-steppe
  - Unclassified Shrubland

## Reference Map



1:24,000 WGS 1984 UTM Zone 11N

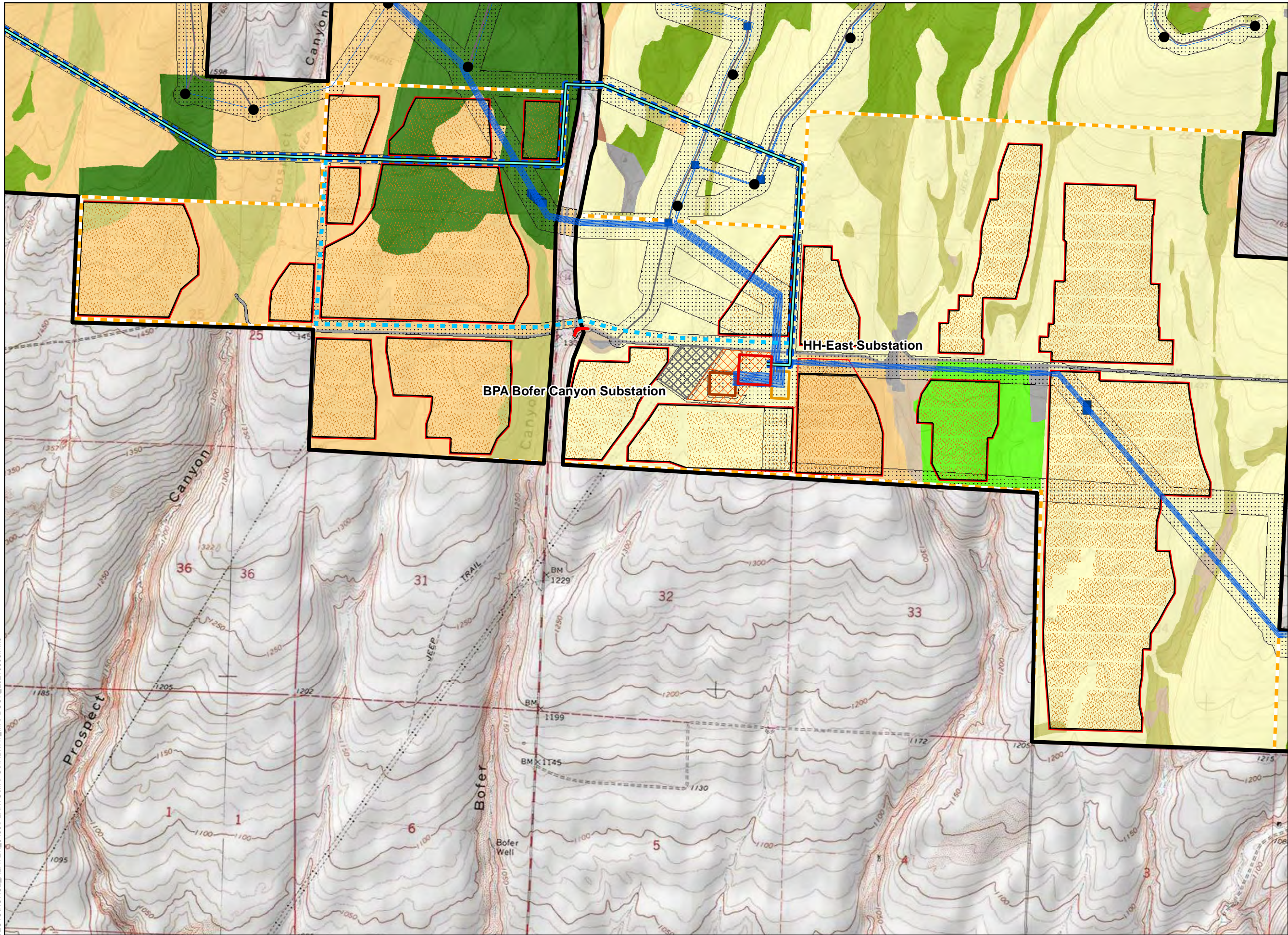


NOT FOR CONSTRUCTION





R:\PROJECTS\HORSE HEAVEN\_6430\PLANT\MAPS\HABITAT\_MAPBOOK\_20210803.mxd



# Horse Heaven Wind Project



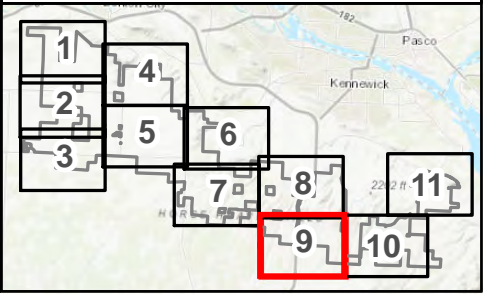
Preliminary Draft - for review  
**Habitat Types and Subtypes**  
Map 9 of 11  
BENTON COUNTY, WA

- Project Lease Boundary
- Wind Energy Micrositing Corridor
- Option 1 Turbine Layout
- 230-kV Intertie Transmission Line (Primary)
- 230-kV Alternate Intertie Transmission Line
- O & M Facility
- Battery Storage
- Intersection Improvement Area
- Laydown Yard
- Project Substation (Primary)
- Solar Siting Area
- Solar Array
- Solar Array Fencing
- Solar Array Road
- BPA Substation (Primary)
- Junction Box
- Collection Line
- CraneCL\_OnRoad
- RoadCL

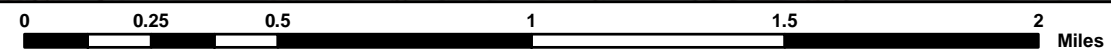
## Habitat Types and Subtypes

- Agricultural land
- Developed/disturbed
- Grassland**
  - Eastside (Interior) Grasslands
  - Non-native Grassland
  - Planted Grassland
  - Unclassified Grassland
- Shrubland**
  - Rabbitbrush Shrubland
  - Sagebrush Shrub-steppe
  - Unclassified Shrubland

## Reference Map



1:24,000 WGS 1984 UTM Zone 11N

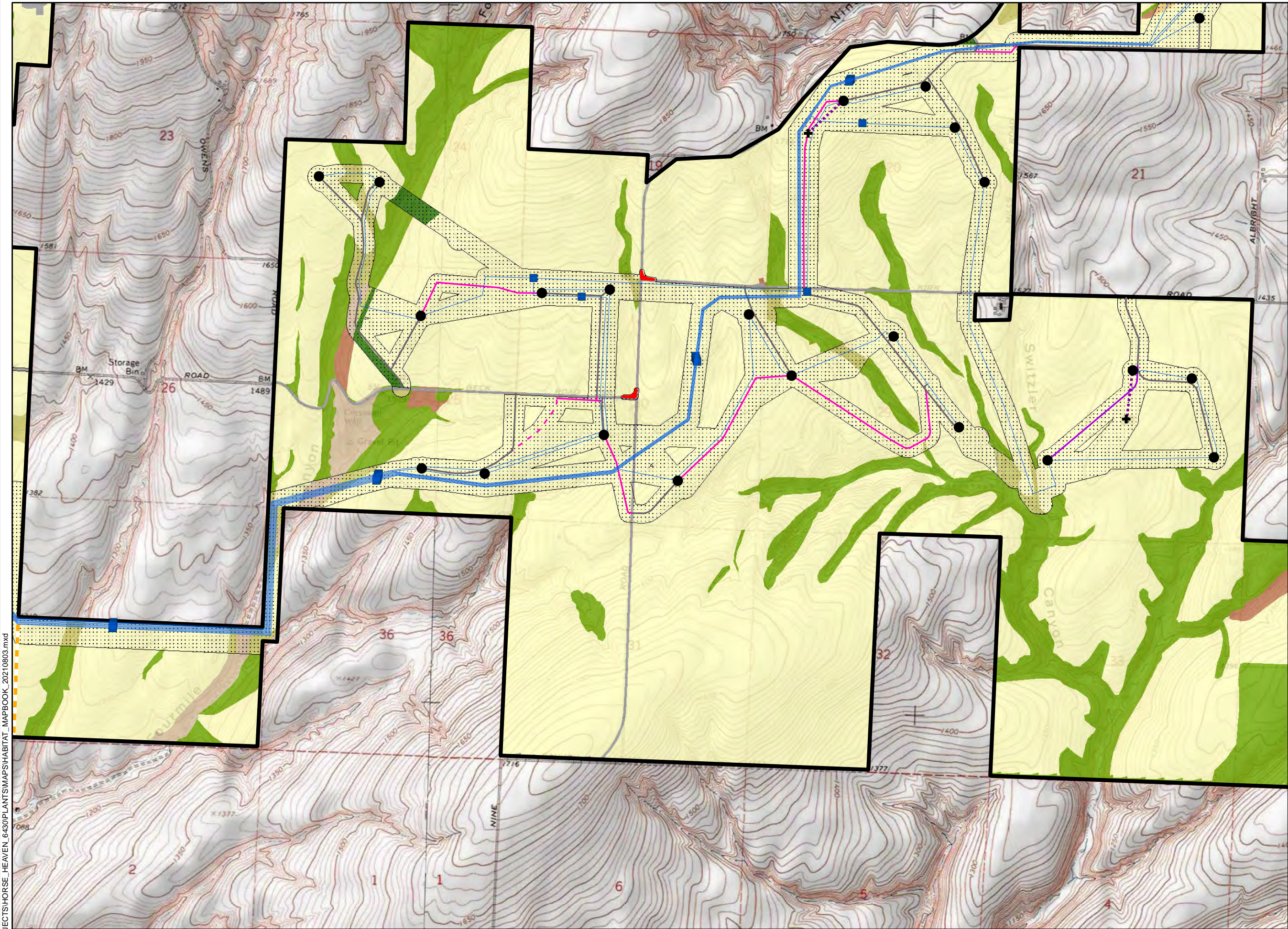


NOT FOR CONSTRUCTION





R:\PROJECTS\HORSE HEAVEN\_6430\PLANTMAPS\HABITAT\_MAPBOOK\_20210803.mxd



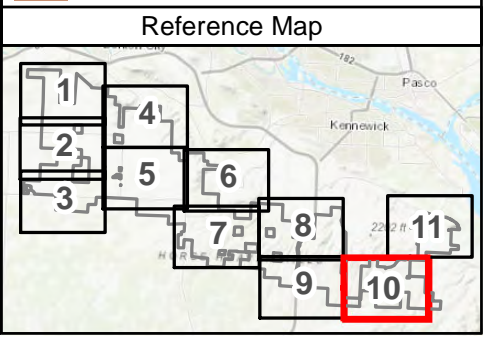
# Horse Heaven Wind Project



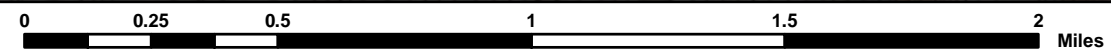
Preliminary Draft - for review  
**Habitat Types and Subtypes**  
Map 10 of 11  
BENTON COUNTY, WA

- Project Lease Boundary
- Wind Energy Micrositing Corridor
- Option 1 Turbine Layout
- Met Tower
- Met Tower Access Road
- Intersection Improvement Area
- Solar Siting Area
- Junction Box
- Collection Line
- CraneCL
- CraneCL\_OnRoad
- CraneCL\_OnRoad\_Alt
- RoadCL
- RoadCL\_Alt

- Habitat Types and Subtypes**
- Agricultural land
  - Developed/disturbed
- Grassland**
- Non-native Grassland
  - Planted Grassland
  - Unclassified Grassland
- Shrubland**
- Rabbitbrush Shrubland
  - Sagebrush Shrub-steppe
  - Unclassified Shrubland



1:24,000 WGS 1984 UTM Zone 11N

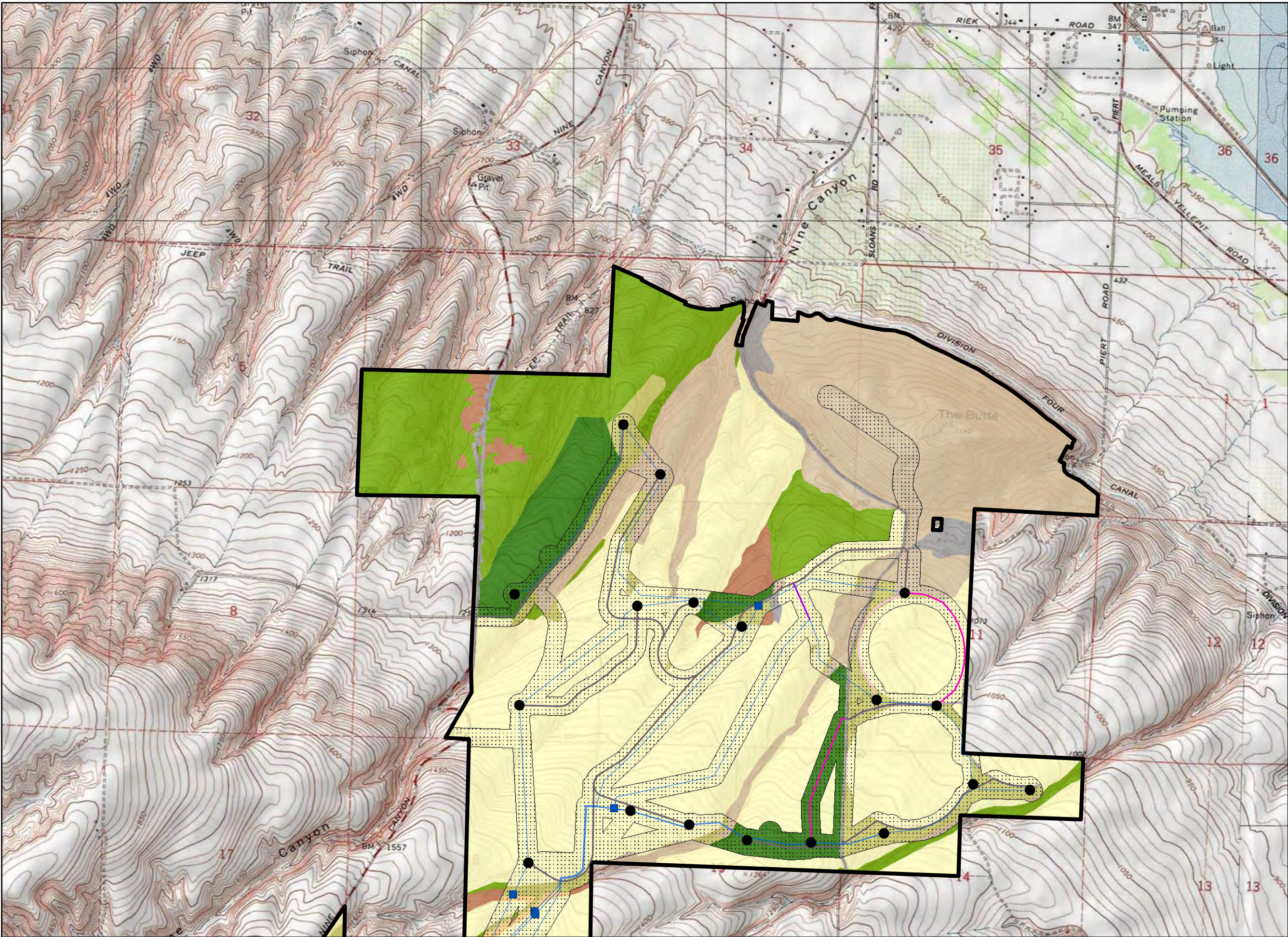


NOT FOR CONSTRUCTION





R:\PROJECTS\HORSE\_HEAVEN\_6430\PLANTSMAP\HABITAT\_MAPBOOK\_20210803.mxd



# Horse Heaven Wind Project



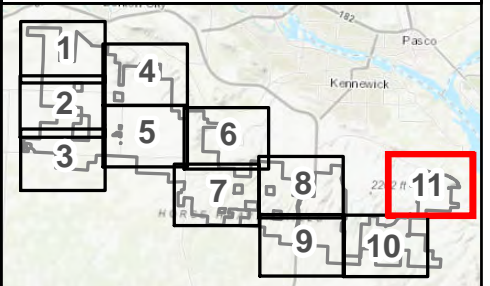
Preliminary Draft - for review  
**Habitat Types and Subtypes**  
Map 11 of 11  
BENTON COUNTY, WA

- Project Lease Boundary
- Wind Energy Micrositing Corridor
- Option 1 Turbine Layout
- Junction Box
- Collection Line
- CraneCL
- CraneCL\_OnRoad
- CraneCL\_Alt
- CraneCL\_OnRoad\_Alt
- RoadCL
- RoadCL\_Alt

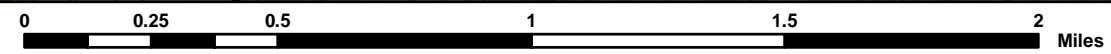
## Habitat Types and Subtypes

- Agricultural land
- Developed/disturbed
- Grassland**
  - Non-native Grassland
  - Planted Grassland
  - Unclassified Grassland
- Shrubland**
  - Rabbitbrush Shrubland
  - Sagebrush Shrub-steppe
  - Unclassified Shrubland

## Reference Map



1:24,000 WGS 1984 UTM Zone 11N



NOT FOR CONSTRUCTION





**Table 3.4-1. Habitat Types and Subtypes within the Project Lease Boundary, Micrositing Corridor, and Solar Siting Areas**

Habitat Type	Habitat Subtype	Project Lease Boundary		Micrositing Corridor		Solar Siting Areas	
		Acres	Percent of Project Lease Boundary	Acres <sup>3/</sup>	Percent of Micrositing Corridor	Acres <sup>3/</sup>	Percent of Solar Siting Areas
Agricultural land	Agricultural land	53,450	74%	8,636	79%	8,409	78%
Developed/disturbed	Developed/disturbed	836	1%	92	1%	129	1%
Grassland	Eastside (Interior) Grassland	174	0.2%	20	0.2%	153	1%
	Non-native grassland	1,636	2%	648	6%	451	4%
	Planted grassland	4,388	6%	881	8%	519	5%
	Unclassified grassland <sup>1/</sup>	6,125	8%	--	--	--	--
Shrubland	Dwarf shrub-steppe	23	<0.1%	21	0.2%	--	--
	Rabbitbrush shrubland	3,038	4%	450	4%	1,025	10%
	Sagebrush shrub-steppe	1,372	2%	177	2%	68	1%
	Unclassified shrubland <sup>1/</sup>	1,437	2%	--	--	--	--
<b>Total<sup>2/</sup></b>		<b>72,428</b>	<b>100%</b>	<b>10,925</b>	<b>100%</b>	<b>10,755</b>	<b>100%</b>

Notes:

1/ Unclassified grassland and unclassified shrubland habitat subtypes include those areas mapped during surveys conducted in 2018 or using NLCD data that were not further classified into subtypes (e.g., planted grassland, sagebrush shrub-steppe) during the the 2020 and 2021 field surveys or 2020 desktop analysis.

2/ Totals may not sum exactly due to rounding.

3/ Areas that fall within both the Micrositing Corridor and the Solar Siting Areas (e.g., wind-associated collection lines that pass through the Solar Siting Areas) are included only in the total acres listed for the Solar Siting Areas.

Note: Total acres within Micrositing Corridor changed because the original tables inadvertently double-counted a small portion of the Solar Siting Area (i.e., a small portion of the Solar Siting Area was also included in the acreages for the Micrositing Corridor)



**Table 3.4-14. Estimated Impacts on Habitat Types from Construction and Operation of the Project**

e	Habitat Subtype	Micrositing Corridor		Solar Siting Areas		
		Temporary Impact (Acres) <sup>1/</sup>	Permanent Impact (Acres) <sup>1/</sup>	Temporary Impact (Acres) <sup>2/</sup>	Permanent Impact (Acres) <sup>2/</sup>	Modified Habitat Impact (Acres) <sup>2/</sup>
Agricultural land	Agricultural land	2,269	252	55	237	5,314
Developed/disturbed	Developed/disturbed	21	2	0.01	--	--
Grassland	Eastside (Interior) Grassland	15	--	2	5	68
	Non-native grassland	136	11	1	2	23
	Planted grassland	259	21	4	12	204
Shrubland	Dwarf shrub-steppe	9	1	--	--	--
	Rabbitbrush shrubland	141	11	13	38	668
	Sagebrush shrub-steppe	31	1	0.1	--	0.2
<b>Total<sup>3/</sup></b>		<b>2,881</b>	<b>299</b>	<b>76</b>	<b>294</b>	<b>6,276</b>

Notes:

1/ Overlapping permanent disturbance is subtracted from temporary impact corridors/areas (e.g., temporary impact area around a Turbine does not include the Turbine foundation and graveled areas); those are included only in the permanent impact column.

2/ Temporary impacts associated with solar facilities include a 10-foot construction buffer along the outside of the solar fencelines. Permanent impacts include the solar inverters and new access roads within the solar siting areas. Modified impacts are associated with the solar arrays and include those areas within the solar fencelines that are outside areas of permanent impact. Following construction, low growing vegetation would be planted under and between the solar arrays; therefore, these impacts would be considered a modification of habitat versus a temporary or permanent impact.

3/ Totals may not sum exactly due to rounding.