

**LEGEND**

- Project Lease Boundary
- Solar Siting Area
- Micrositing Corridor - No Turbines
- Micrositing Corridor - Turbines
- Proposed Turbine - Option 1

**NOTE(S)**

1. ALL INFRASTRUCTURE REMOVED:  
- WITHIN HIGH OR ABOVE WILDLIFE MOVEMENT CORRIDORS

2. PROJECT COMPONENTS (TURBINES, SOLAR ARRAYS, AND BESS) REMOVED:  
- WITHIN MEDIUM OR ABOVE WILDLIFE MOVEMENT CORRIDORS  
- WITHIN THE 2MI FEHAST BUFFER

**REFERENCE(S)**

1. COORDINATE SYSTEM: WGS 1984 UTM ZONE 11N  
2. MOVEMENT CORRIDORS: WDFW 2021  
([https://wacconnected.org/cp\\_addendumanalyses/](https://wacconnected.org/cp_addendumanalyses/))

**CLIENT**  
STATE OF WASHINGTON ENERGY FACILITY SITE EVALUATION COUNCIL

**PROJECT**  
HORSE HEAVEN WIND FARM

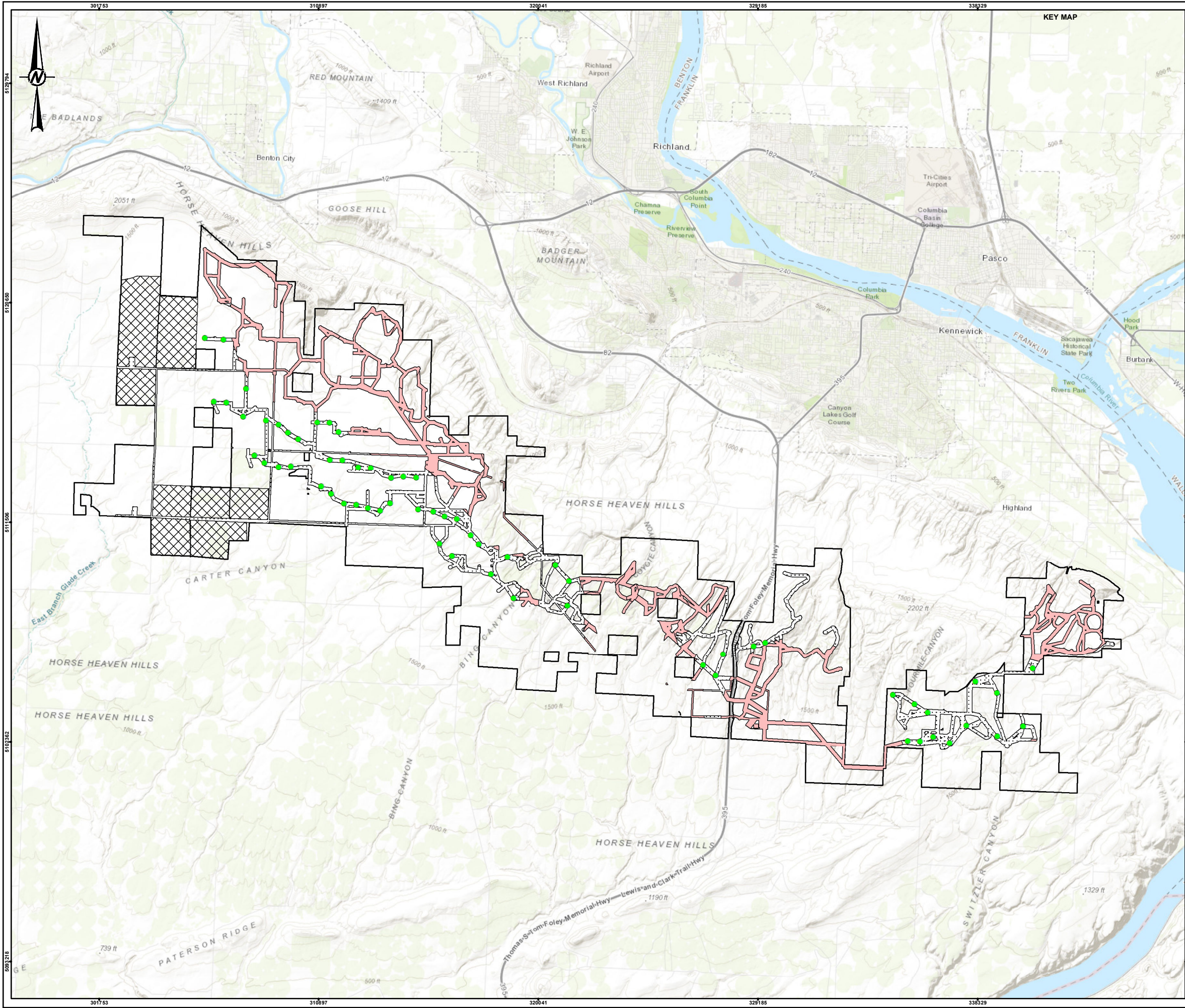
**TITLE**  
TURBINE LAYOUT OPTION 1  
REMOVAL OF TURBINES - FOR COUNCIL REVIEW CONSIDERATION NO. 1

CONSULTANT	YYYY-MM-DD	2024-01-08
DESIGNED	MK	
PREPARED	SCH	
REVIEWED	JP	
APPROVED	AH/SG/AM	

PROJECT NO.	CONTROL	REV.	FIGURE
31405435.000	01	0	X0.1-1

IF THIS MEASUREMENT DOES NOT MATCH WHAT IS SHOWN, THE SHEET SIZE HAS BEEN MODIFIED FROM: ANSI B





**LEGEND**

- Project Lease Boundary
- Solar Siting Area
- Micrositing Corridor - No Turbines
- Micrositing Corridor - Turbines
- Proposed Turbine - Option 2

**NOTE(S)**

1. ALL INFRASTRUCTURE REMOVED:  
- WITHIN HIGH OR ABOVE WILDLIFE MOVEMENT CORRIDORS

2. PROJECT COMPONENTS (TURBINES, SOLAR ARRAYS, AND BESS) REMOVED:  
- WITHIN MEDIUM OR ABOVE WILDLIFE MOVEMENT CORRIDORS  
- WITHIN THE 2MI FEHAST BUFFER

**REFERENCE(S)**

1. COORDINATE SYSTEM: WGS 1984 UTM ZONE 11N  
2. MOVEMENT CORRIDORS: WDFW 2021  
([https://wacnected.org/cp\\_addendumanalyses/](https://wacnected.org/cp_addendumanalyses/))

**CLIENT**  
STATE OF WASHINGTON ENERGY FACILITY SITE EVALUATION COUNCIL

**PROJECT**  
HORSE HEAVEN WIND FARM

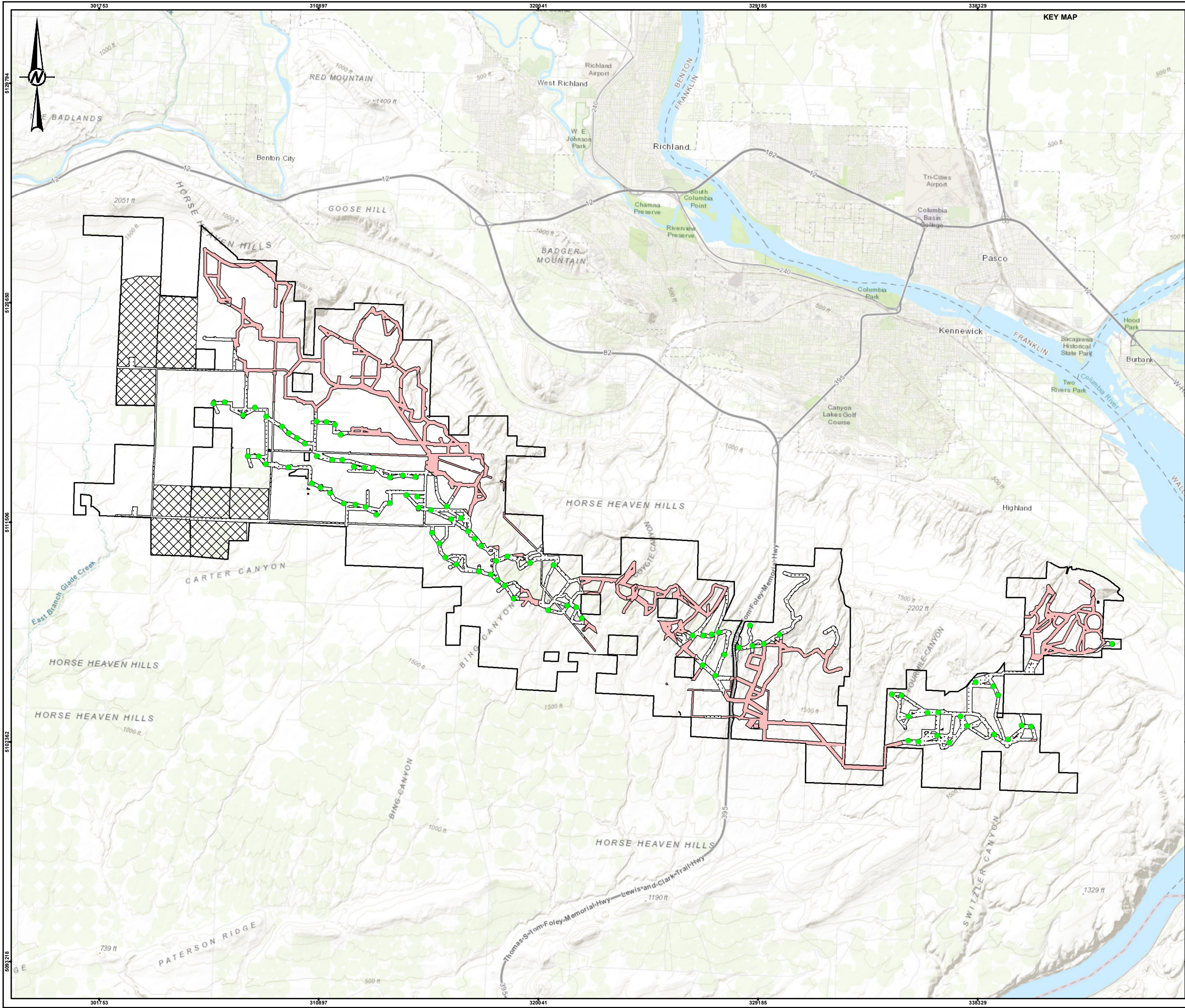
**TITLE**  
TURBINE LAYOUT OPTION 2  
REMOVAL OF TURBINES - FOR COUNCIL REVIEW CONSIDERATION NO. 1

CONSULTANT	YYYY-MM-DD	2024-01-08
DESIGNED	MK	
PREPARED	SCH	
REVIEWED	JP	
APPROVED	AH/SG/AM	

PROJECT NO.	CONTROL	REV.	FIGURE
31405435.000	01	0	X0.1-2

IF THIS MEASUREMENT DOES NOT MATCH WHAT IS SHOWN, THE SHEET SIZE HAS BEEN MODIFIED FROM: ANSI B





**LEGEND**

- Project Lease Boundary
- Solar Siting Area
- Micrositing Corridor - No Turbines
- Micrositing Corridor - Turbines
- Proposed Turbine - Option 1

**NOTE(S)**

1. ALL INFRASTRUCTURE REMOVED:  
- WITHIN HIGH OR ABOVE WILDLIFE MOVEMENT CORRIDORS

2. PROJECT COMPONENTS (TURBINES, SOLAR ARRAYS, AND BESS) REMOVED:  
- WITHIN MEDIUM OR ABOVE WILDLIFE MOVEMENT CORRIDORS  
- WITHIN THE 2MI FEHA NEST BUFFER  
- TURBINES IDENTIFIED WITH "CLASS 1" IMPACTS OR HIGHER

3. PREVIOUSLY, IMPACTS WERE DEFINED AS:  
CLASS 0 = ZERO IMPACTS TOTAL CLASS 1 = ONE IMPACT TOTAL CLASS 2 = TWO IMPACTS TOTAL  
CLASS 3 = ANY CULTURAL IMPACT, ANY FEHA NEST IMPACT, OR THREE OR MORE TOTAL IMPACTS  
IMPACTS WERE CALCULATED AS FOLLOWS:

1. NOISE BASED IMPACT: IMPACTS ARE BASED ON THE FOLLOWING THRESHOLD:  
- NOISE IMPACTS OF >50 DBA ON NON-PARTICIPATING NOISE RECEPTORS AS SHOWN IN THE SOUND LEVEL MODEL  
SHOWN IN FIGURES 4.11-3 AND 4.11-4. NOTE THAT 0 TURBINES WERE DESIGNATED AS HAVING A HIGH IMPACT DUE TO OPERATIONAL NOISE.

2. SHADOW FLICKER IMPACT: IMPACTS ARE BASED ON THE FOLLOWING THRESHOLD:  
- SHADOW FLICKER IMPACTS OF >15 HOURS AS SHOWN IN THE SHADOW FLICKER MODEL IN FIGURES 4.10-9 AND 4.10-10 OF THE DEIS.

3. VISUAL IMPACT: IMPACTS ARE BASED ON THE FOLLOWING THRESHOLDS (TURBINE SELECTION/VIEWSHED MAY CHANGE BASED ON APPLICANT RESPONSE TO DATA REQUEST #7):  
- TURBINE REMOVAL RECOMMENDATIONS BY SWCA OR  
- VIEWSHED ANALYSIS PROVIDED BY SWCA

4. RECREATION IMPACT: THE VIEWSHED ANALYSIS FOR HORSE HEAVEN HILLS RECREATION AREA WAS PULLED OUT AS A SEPARATE IMPACT FROM SWCA'S DELIVERABLE DUE TO THE BLM-ADMINISTERED RECREATION AREA BEING ADJACENT TO THE LEASE BOUNDARY AND PARAGLIDING LAUNCH LOCATIONS OCCURRING WITHIN THIS RECREATION AREA.

5. WILDLIFE IMPACT: IMPACTS ARE BASED ON THE FOLLOWING THRESHOLDS:  
- INTERSECTION WITHIN A 2-MILE BUFFER AROUND FEHA NESTS OR  
- INTERSECTION WITHIN MIGRATORY CORRIDOR CLASSES OF HIGH OR VERY HIGH.

6. VEG IMPACT: IMPACTS ARE BASED ON THE FOLLOWING THRESHOLDS:  
- INTERSECTION WITH DWARF SHRUB-STEPPE OR  
- INTERSECTION WITH SAGEBRUSH SHRUB-STEPPE HABITAT

7. CULTURAL IMPACT: IMPACTS ARE BASED ON THE FOLLOWING THRESHOLDS:  
- KNOWN SENSITIVE AREAS WERE GIVEN A 30M BUFFER O  
- ADDITIONAL AREAS OF CONCERN PROVIDED BY EFSEC

**REFERENCE(S)**

1. COORDINATE SYSTEM: WGS 1984 UTM ZONE 11N  
2. MOVEMENT CORRIDORS: WDFW 2021  
([https://wacnected.org/cp\\_addendumanalyses/](https://wacnected.org/cp_addendumanalyses/))

**CLIENT**

STATE OF WASHINGTON ENERGY FACILITY SITE EVALUATION COUNCIL

**PROJECT**

HORSE HEAVEN WIND FARM

**TITLE**

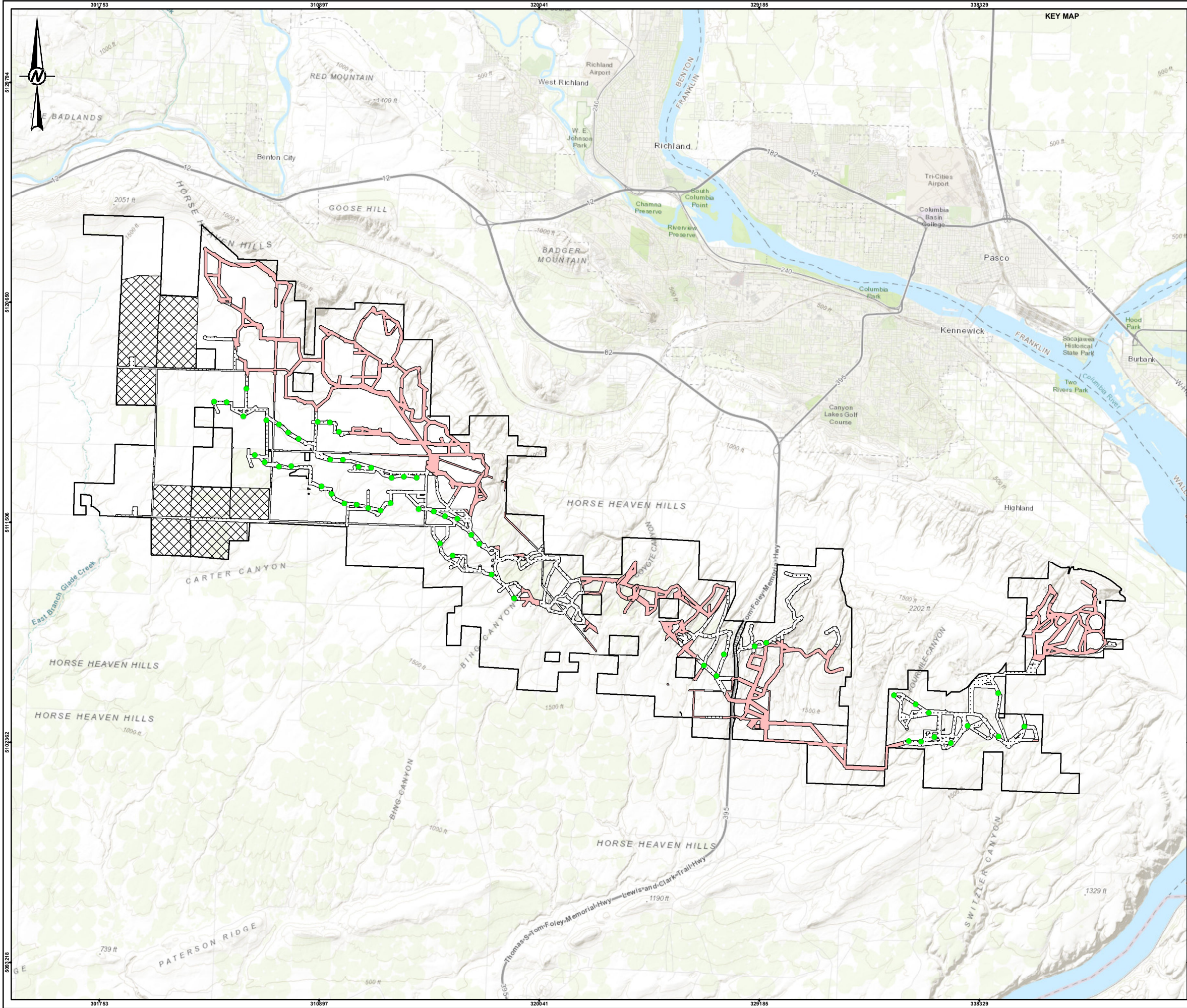
TURBINE LAYOUT OPTION 1  
REMOVAL OF TURBINES - FOR COUNCIL REVIEW CONSIDERATION NO. 2

CONSULTANT	YYYY-MM-DD	2024-01-08
DESIGNED	MK	
PREPARED	SCH	
REVIEWED	JP	
APPROVED	AH/SG/AM	

PROJECT NO.	CONTROL	REV.	FIGURE
31405435.000	01	0	X0.2-1

IF THIS MEASUREMENT DOES NOT MATCH WHAT IS SHOWN, THE SHEET SIZE HAS BEEN MODIFIED FROM: ANSI B





**LEGEND**

- Project Lease Boundary
- Solar Siting Area
- Micrositing Corridor - No Turbines
- Micrositing Corridor - Turbines
- Proposed Turbine - Option 2

**NOTE(S)**

1. ALL INFRASTRUCTURE REMOVED:  
- WITHIN HIGH OR ABOVE WILDLIFE MOVEMENT CORRIDORS

2. PROJECT COMPONENTS (TURBINES, SOLAR ARRAYS, AND BESS) REMOVED:  
- WITHIN MEDIUM OR ABOVE WILDLIFE MOVEMENT CORRIDORS  
- WITHIN THE 2MI FEHA NEST BUFFER  
- TURBINES IDENTIFIED WITH "CLASS 1" IMPACTS OR HIGHER

3. PREVIOUSLY, IMPACTS WERE DEFINED AS:  
CLASS 0 = ZERO IMPACTS TOTAL CLASS 1 = ONE IMPACT TOTAL CLASS 2 = TWO IMPACTS TOTAL  
CLASS 3 = ANY CULTURAL IMPACT, ANY FEHA NEST IMPACT, OR THREE OR MORE TOTAL IMPACTS  
IMPACTS WERE CALCULATED AS FOLLOWS:

1. NOISE BASED IMPACT: IMPACTS ARE BASED ON THE FOLLOWING THRESHOLD:  
- NOISE IMPACTS OF >50 DBA ON NON-PARTICIPATING NOISE RECEPTORS AS SHOWN IN THE SOUND LEVEL MODEL  
SHOWN IN FIGURES 4.11-3 AND 4.11-4. NOTE THAT 0 TURBINES WERE DESIGNATED AS HAVING A HIGH IMPACT DUE TO OPERATIONAL NOISE.

2. SHADOW FLICKER IMPACT: IMPACTS ARE BASED ON THE FOLLOWING THRESHOLD:  
- SHADOW FLICKER IMPACTS OF >15 HOURS AS SHOWN IN THE SHADOW FLICKER MODEL IN FIGURES 4.10-9 AND 4.10-10 OF THE DEIS.

3. VISUAL IMPACT: IMPACTS ARE BASED ON THE FOLLOWING THRESHOLDS (TURBINE SELECTION/VIEWSHED MAY CHANGE BASED ON APPLICANT RESPONSE TO DATA REQUEST #7):  
- TURBINE REMOVAL RECOMMENDATIONS BY SWCA OR  
- VIEWSHED ANALYSIS PROVIDED BY SWCA

4. RECREATION IMPACT: THE VIEWSHED ANALYSIS FOR HORSE HEAVEN HILLS RECREATION AREA WAS PULLED OUT AS A SEPARATE IMPACT FROM SWCA'S DELIVERABLE DUE TO THE BLM-ADMINISTERED RECREATION AREA BEING ADJACENT TO THE LEASE BOUNDARY AND PARAGLIDING LAUNCH LOCATIONS OCCURRING WITHIN THIS RECREATION AREA.

5. WILDLIFE IMPACT: IMPACTS ARE BASED ON THE FOLLOWING THRESHOLDS:  
- INTERSECTION WITHIN A 2-MILE BUFFER AROUND FEHA NESTS OR  
- INTERSECTION WITHIN MIGRATORY CORRIDOR CLASSES OF HIGH OR VERY HIGH.

6. VEG IMPACT: IMPACTS ARE BASED ON THE FOLLOWING THRESHOLDS:  
- INTERSECTION WITH DWARF SHRUB-STEPPE OR  
- INTERSECTION WITH SAGEBRUSH SHRUB-STEPPE HABITAT

7. CULTURAL IMPACT: IMPACTS ARE BASED ON THE FOLLOWING THRESHOLDS:  
- KNOWN SENSITIVE AREAS WERE GIVEN A 30M BUFFER O  
- ADDITIONAL AREAS OF CONCERN PROVIDED BY EFSEC

**REFERENCE(S)**

1. COORDINATE SYSTEM: WGS 1984 UTM ZONE 11N  
2. MOVEMENT CORRIDORS: WDFW 2021  
([https://wacnected.org/cp\\_addendumanalyses/](https://wacnected.org/cp_addendumanalyses/))

**CLIENT**

STATE OF WASHINGTON ENERGY FACILITY SITE EVALUATION COUNCIL

**PROJECT**

HORSE HEAVEN WIND FARM

**TITLE**

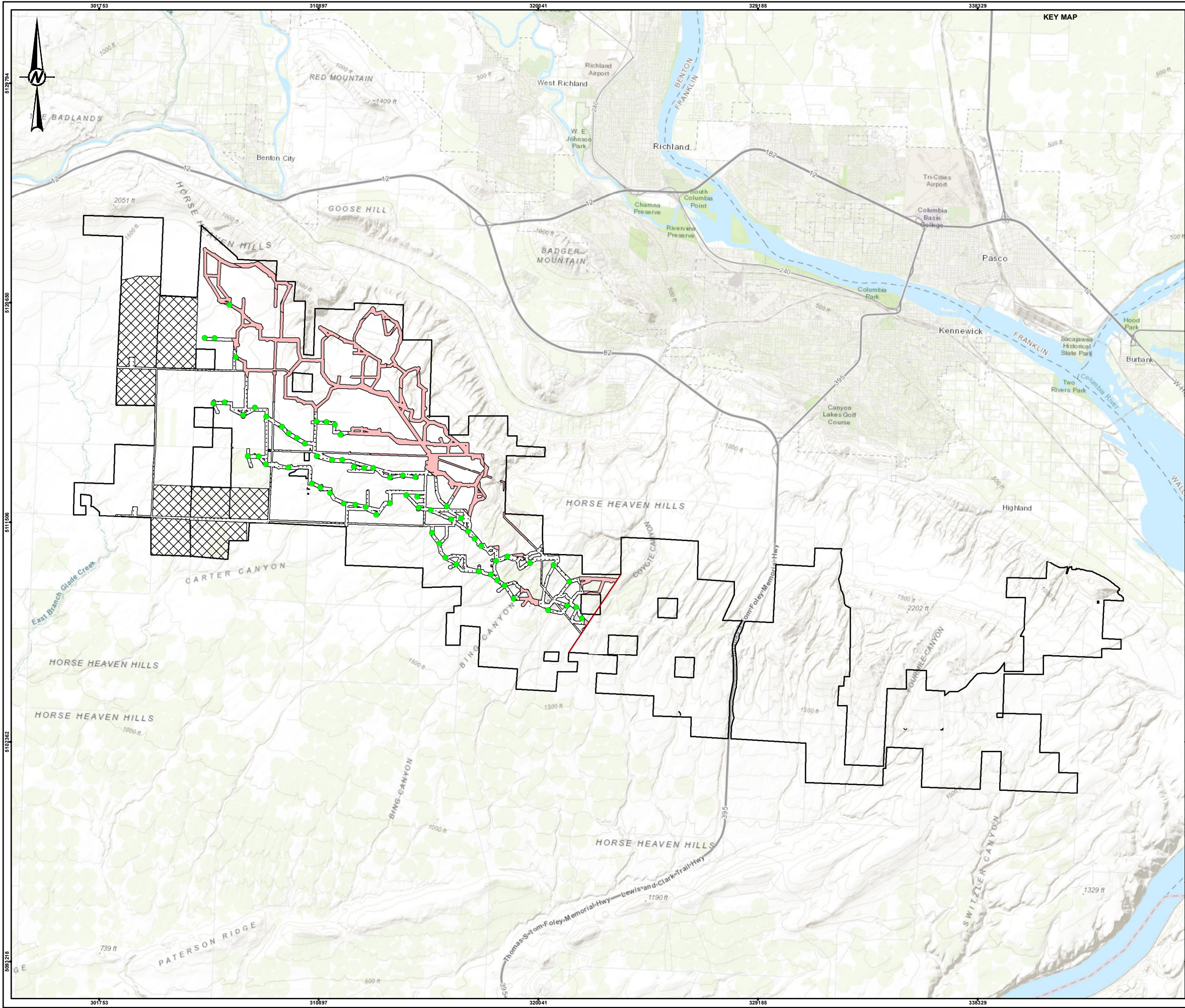
TURBINE LAYOUT OPTION 2  
REMOVAL OF TURBINES - FOR COUNCIL REVIEW CONSIDERATION NO. 2

CONSULTANT	YYYY-MM-DD	2024-01-08
DESIGNED	MK	
PREPARED	SCH	
REVIEWED	JP	
APPROVED	AH/SG/AM	

PROJECT NO.	CONTROL	REV.	FIGURE
31405435.000	01	0	X0.2-2

IF THIS MEASUREMENT DOES NOT MATCH WHAT IS SHOWN, THE SHEET SIZE HAS BEEN MODIFIED FROM: ANSI B 11





**LEGEND**

- Project Lease Boundary
- Solar Siting Area
- Micrositing Corridor - No Turbines
- Micrositing Corridor - Turbines
- Proposed Turbine - Option 1
- "East of Straub Canyon" Demarcation

**NOTE(S)**

1. ALL INFRASTRUCTURE REMOVED:  
- WITHIN HIGH OR ABOVE WILDLIFE MOVEMENT CORRIDORS  
- EAST OF STRAUB CANYON AS DEMARCATED ON THE FIGURE

2. PROJECT COMPONENTS (TURBINES, SOLAR ARRAYS, AND BESS) REMOVED:  
- WITHIN MEDIUM OR ABOVE WILDLIFE MOVEMENT CORRIDORS  
- WITHIN THE 2MI FEHAST BUFFER

**REFERENCE(S)**

1. COORDINATE SYSTEM: WGS 1984 UTM ZONE 11N  
2. MOVEMENT CORRIDORS: WDFW 2021  
([https://wacconnected.org/cp\\_addendumanalyses/](https://wacconnected.org/cp_addendumanalyses/))

**CLIENT**  
STATE OF WASHINGTON ENERGY FACILITY SITE EVALUATION COUNCIL

**PROJECT**  
HORSE HEAVEN WIND FARM

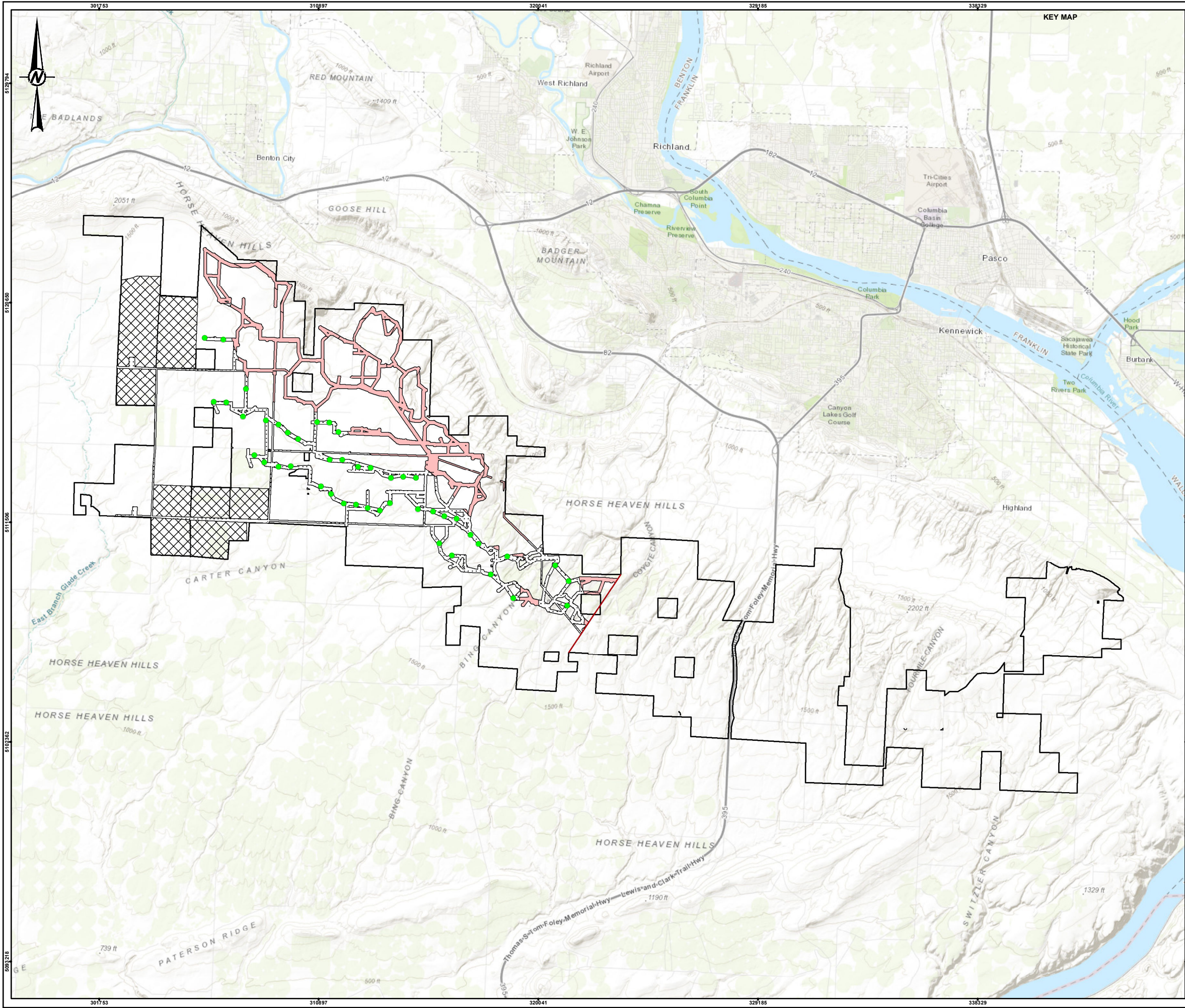
**TITLE**  
TURBINE LAYOUT OPTION 1  
REMOVAL OF TURBINES - FOR COUNCIL REVIEW CONSIDERATION NO. 3

CONSULTANT	YYYY-MM-DD	2024-01-08
DESIGNED	MK	
PREPARED	SCH	
REVIEWED	JP	
APPROVED	AH/SG/AM	

PROJECT NO.	CONTROL	REV.	FIGURE
31405435.000	01	0	X0.3-1

IF THIS MEASUREMENT DOES NOT MATCH WHAT IS SHOWN, THE SHEET SIZE HAS BEEN MODIFIED FROM: ANSI B





**LEGEND**

- Project Lease Boundary
- Solar Siting Area
- Micrositing Corridor - No Turbines
- Micrositing Corridor - Turbines
- Proposed Turbine - Option 2
- "East of Straub Canyon" Demarcation

**NOTE(S)**

1. ALL INFRASTRUCTURE REMOVED:  
- WITHIN HIGH OR ABOVE WILDLIFE MOVEMENT CORRIDORS  
- EAST OF STRAUB CANYON AS DEMARCATED ON THE FIGURE

2. PROJECT COMPONENTS (TURBINES, SOLAR ARRAYS, AND BESS) REMOVED:  
- WITHIN MEDIUM OR ABOVE WILDLIFE MOVEMENT CORRIDORS  
- WITHIN THE 2MI FEHAST BUFFER

**REFERENCE(S)**

1. COORDINATE SYSTEM: WGS 1984 UTM ZONE 11N  
2. MOVEMENT CORRIDORS: WDFW 2021  
([https://wacconnected.org/cp\\_addendumanalyses/](https://wacconnected.org/cp_addendumanalyses/))

**CLIENT**  
STATE OF WASHINGTON ENERGY FACILITY SITE EVALUATION COUNCIL

**PROJECT**  
HORSE HEAVEN WIND FARM

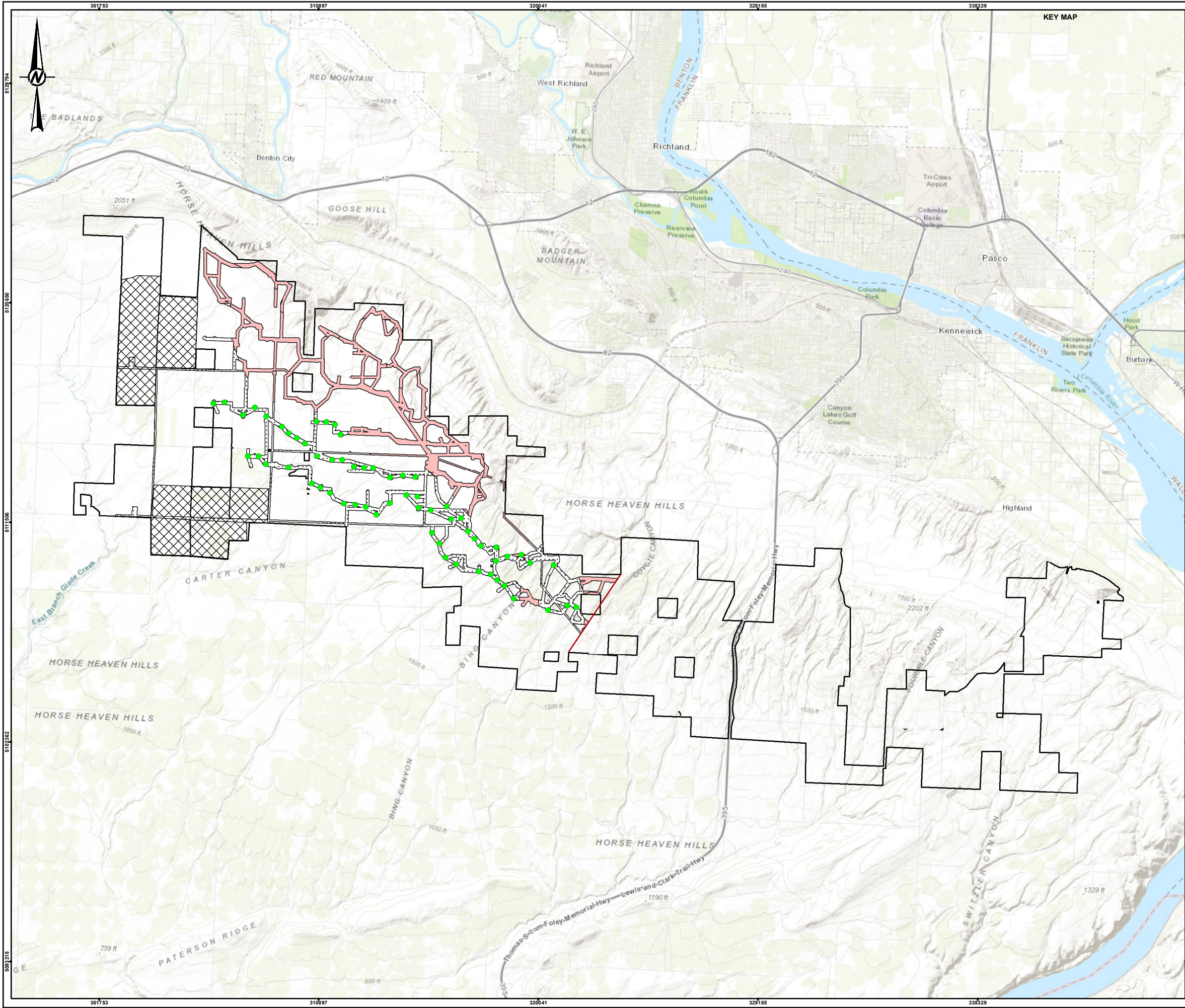
**TITLE**  
TURBINE LAYOUT OPTION 2  
REMOVAL OF TURBINES - FOR COUNCIL REVIEW CONSIDERATION NO. 3

CONSULTANT	YYYY-MM-DD	2024-01-08
DESIGNED	MK	
PREPARED	SCH	
REVIEWED	JP	
APPROVED	AH/SG/AM	

PROJECT NO.	CONTROL	REV.	FIGURE
31405435.000	01	0	X0.3-2

IF THIS MEASUREMENT DOES NOT MATCH WHAT IS SHOWN, THE SHEET SIZE HAS BEEN MODIFIED FROM: ANSI B





**LEGEND**

- Project Lease Boundary
- Solar Siting Area
- Micrositing Corridor - No Turbines
- Micrositing Corridor - Turbines
- Proposed Turbine - Option 1
- "East of Straub Canyon" Demarcation

**NOTE(S)**

1. ALL INFRASTRUCTURE REMOVED:  
- WITHIN HIGH OR ABOVE WILDLIFE MOVEMENT CORRIDORS  
- EAST OF STRAUB CANYON AS DEMARCATED ON THE FIGURE

2. PROJECT COMPONENTS (TURBINES, SOLAR ARRAYS, AND BESS) REMOVED:  
- WITHIN MEDIUM OR ABOVE WILDLIFE MOVEMENT CORRIDORS  
- WITHIN THE 2MI FEHA NEST BUFFER  
- TURBINES IDENTIFIED WITH "CLASS 1" IMPACTS OR HIGHER

3. PREVIOUSLY, IMPACTS WERE DEFINED AS:  
CLASS 0 = ZERO IMPACTS TOTAL CLASS 1 = ONE IMPACT TOTAL CLASS 2 = TWO IMPACTS TOTAL  
CLASS 3 = ANY CULTURAL IMPACT, ANY FEHA NEST IMPACT, OR THREE OR MORE TOTAL IMPACTS  
IMPACTS WERE CALCULATED AS FOLLOWS:

1.NOISE BASED IMPACT: IMPACTS ARE BASED ON THE FOLLOWING THRESHOLD:  
-NOISE IMPACTS OF >50 DBA ON NON-PARTICIPATING NOISE RECEPTORS AS SHOWN IN THE SOUND LEVEL MODEL  
SHOWN IN FIGURES 4.11-3 AND 4.11-4. NOTE THAT 0 TURBINES WERE DESIGNATED AS HAVING A HIGH IMPACT DUE TO OPERATIONAL NOISE.

2.SHADOW FLICKER IMPACT: IMPACTS ARE BASED ON THE FOLLOWING THRESHOLD:  
-SHADOW FLICKER IMPACTS OF >15 HOURS AS SHOWN IN THE SHADOW FLICKER MODEL IN FIGURES 4.10-9 AND 4.10-10 OF THE DEIS.

3.VISUAL IMPACT: IMPACTS ARE BASED ON THE FOLLOWING THRESHOLDS (TURBINE SELECTION/VIEWSHED MAY CHANGE BASED ON APPLICANT RESPONSE TO DATA REQUEST #7):  
-TURBINE REMOVAL RECOMMENDATIONS BY SWCA OR  
-VIEWSHED ANALYSIS PROVIDED BY SWCA

4.RECREATION IMPACT: THE VIEWSHED ANALYSIS FOR HORSE HEAVEN HILLS RECREATION AREA WAS PULLED OUT AS A SEPARATE IMPACT FROM SWCA'S DELIVERABLE DUE TO THE BLM-ADMINISTERED RECREATION AREA BEING ADJACENT TO THE LEASE BOUNDARY AND PARAGLIDING LAUNCH LOCATIONS OCCURRING WITHIN THIS RECREATION AREA.

5.WILDLIFE IMPACT: IMPACTS ARE BASED ON THE FOLLOWING THRESHOLDS:  
-INTERSECTION WITHIN A 2-MILE BUFFER AROUND FEHA NESTS OR  
-INTERSECTION WITHIN MIGRATORY CORRIDOR CLASSES OF HIGH OR VERY HIGH.

6.VEG IMPACT: IMPACTS ARE BASED ON THE FOLLOWING THRESHOLDS:  
-INTERSECTION WITH DWARF SHRUB-STEPPE OR  
-INTERSECTION WITH SAGEBRUSH SHRUB-STEPPE HABITAT

7.CULTURAL IMPACT: IMPACTS ARE BASED ON THE FOLLOWING THRESHOLDS:  
-KNOWN SENSITIVE AREAS WERE GIVEN A 30M BUFFER O  
-ADDITIONAL AREAS OF CONCERN PROVIDED BY EFSEC

**REFERENCE(S)**

1. COORDINATE SYSTEM: WGS 1984 UTM ZONE 11N  
2. MOVEMENT CORRIDORS: WDFW 2021  
([https://wacconnected.org/cp\\_addendumanalyses/](https://wacconnected.org/cp_addendumanalyses/))

**CLIENT**

STATE OF WASHINGTON ENERGY FACILITY SITE EVALUATION COUNCIL

**PROJECT**

HORSE HEAVEN WIND FARM

**TITLE**

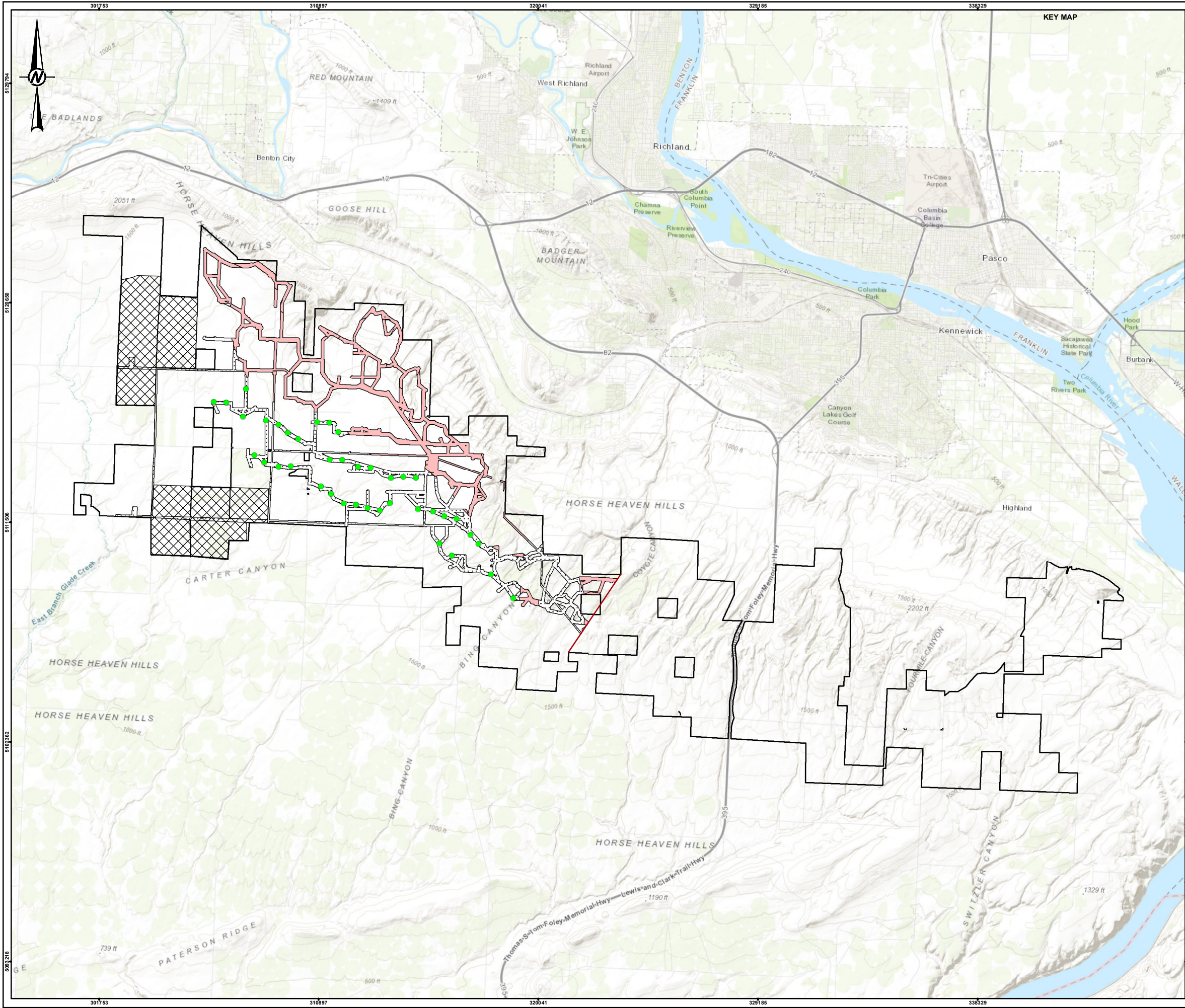
TURBINE LAYOUT OPTION 1  
REMOVAL OF TURBINES - FOR COUNCIL REVIEW CONSIDERATION NO. 4

CONSULTANT	YYYY-MM-DD	2024-01-08
DESIGNED	MK	
PREPARED	SCH	
REVIEWED	JP	
APPROVED	AH/SG/AM	

PROJECT NO.	CONTROL	REV.	FIGURE
31405435.000	01	0	X0.4-1

IF THIS MEASUREMENT DOES NOT MATCH WHAT IS SHOWN, THE SHEET SIZE HAS BEEN MODIFIED FROM: ANSI B





LEGEND

Project Lease Boundary

Solar Siting Area

Micrositing Corridor - No Turbines

Micrositing Corridor - Turbines

Proposed Turbine - Option 2

"East of Straub Canyon" Demarcation

02.55MILES

1" = 2.5 mi

NOTE(S)

1. ALL INFRASTRUCTURE REMOVED:  
- WITHIN HIGH OR ABOVE WILDLIFE MOVEMENT CORRIDORS  
- EAST OF STRAUB CANYON AS DEMARCATED ON THE FIGURE

2. PROJECT COMPONENTS (TURBINES, SOLAR ARRAYS, AND BESS) REMOVED:  
- WITHIN MEDIUM OR ABOVE WILDLIFE MOVEMENT CORRIDORS  
- WITHIN THE 2MI FEHA NEST BUFFER  
- TURBINES IDENTIFIED WITH "CLASS 1" IMPACTS OR HIGHER

3. PREVIOUSLY, IMPACTS WERE DEFINED AS:  
CLASS 0 = ZERO IMPACTS TOTAL CLASS 1 = ONE IMPACT TOTAL CLASS 2 = TWO IMPACTS TOTAL  
CLASS 3 = ANY CULTURAL IMPACT, ANY FEHA NEST IMPACT, OR THREE OR MORE TOTAL IMPACTS  
IMPACTS WERE CALCULATED AS FOLLOWS:  
  
1.NOISE BASED IMPACT: IMPACTS ARE BASED ON THE FOLLOWING THRESHOLD:  
-NOISE IMPACTS OF >50 DBA ON NON-PARTICIPATING NOISE RECEPTORS AS SHOWN IN THE SOUND  
LEVEL MODEL  
SHOWN IN FIGURES 4.11-3 AND 4.11-4. NOTE THAT 0 TURBINES WERE DESIGNATED AS HAVING A HIGH  
IMPACT  
DUE TO OPERATIONAL NOISE.  
  
2.SHADOW FLICKER IMPACT: IMPACTS ARE BASED ON THE FOLLOWING THRESHOLD:  
-SHADOW FLICKER IMPACTS OF >15 HOURS AS SHOWN IN THE SHADOW FLICKER MODEL IN FIGURES  
4.10-9 AND  
4.10-10 OF THE DEIS.  
  
3.VISUAL IMPACT: IMPACTS ARE BASED ON THE FOLLOWING THRESHOLDS (TURBINE  
SELECTION/VIEWSHED MAY  
CHANGE BASED ON APPLICANT RESPONSE TO DATA REQUEST #7):  
-TURBINE REMOVAL RECOMMENDATIONS BY SWCA OR  
-VIEWSHED ANALYSIS PROVIDED BY SWCA  
  
4.RECREATION IMPACT: THE VIEWSHED ANALYSIS FOR HORSE HEAVEN HILLS RECREATION AREA WAS  
PULLED OUT AS  
A SEPARATE IMPACT FROM SWCA'S DELIVERABLE DUE TO THE BLM-ADMINISTERED RECREATION AREA  
BEING  
ADJACENT TO THE LEASE BOUNDARY AND PARAGLIDING LAUNCH LOCATIONS OCCURRING WITHIN THIS  
RECREATION  
AREA.  
  
5.WILDLIFE IMPACT: IMPACTS ARE BASED ON THE FOLLOWING THRESHOLDS:  
-INTERSECTION WITHIN A 2-MILE BUFFER AROUND FEHA NESTS OR  
-INTERSECTION WITHIN MIGRATORY CORRIDOR CLASSES OF HIGH OR VERY HIGH.  
  
6.VEG IMPACT: IMPACTS ARE BASED ON THE FOLLOWING THRESHOLDS:  
-INTERSECTION WITH DWARF SHRUB-STEPPE OR  
-INTERSECTION WITH SAGEBRUSH SHRUB-STEPPE HABITAT  
  
7.CULTURAL IMPACT: IMPACTS ARE BASED ON THE FOLLOWING THRESHOLDS:  
-KNOWN SENSITIVE AREAS WERE GIVEN A 30M BUFFER O  
-ADDITIONAL AREAS OF CONCERN PROVIDED BY EFSEC

REFERENCE(S)

1. COORDINATE SYSTEM: WGS 1984 UTM ZONE 11N  
2. MOVEMENT CORRIDORS: WDFW 2021  
([https://wacconnected.org/cp\\_addendumanalyses/](https://wacconnected.org/cp_addendumanalyses/))

CLIENT

STATE OF WASHINGTON ENERGY FACILITY SITE EVALUATION  
COUNCIL

PROJECT

HORSE HEAVEN WIND FARM

TITLE

TURBINE LAYOUT OPTION 2  
REMOVAL OF TURBINES - FOR COUNCIL REVIEW CONSIDERATION NO. 4

CONSULTANT

YYYY-MM-DD

2024-01-08

DESIGNED

MK

PREPARED

SCH

REVIEWED

JP

APPROVED

AH/SG/AM

PROJECT NO.

CONTROL

REV.

FIGURE

31405435.000

01

0

X0.4-2

IF THIS MEASUREMENT DOES NOT MATCH WHAT IS SHOWN, THE SHEET SIZE HAS BEEN MODIFIED FROM: ANSI B