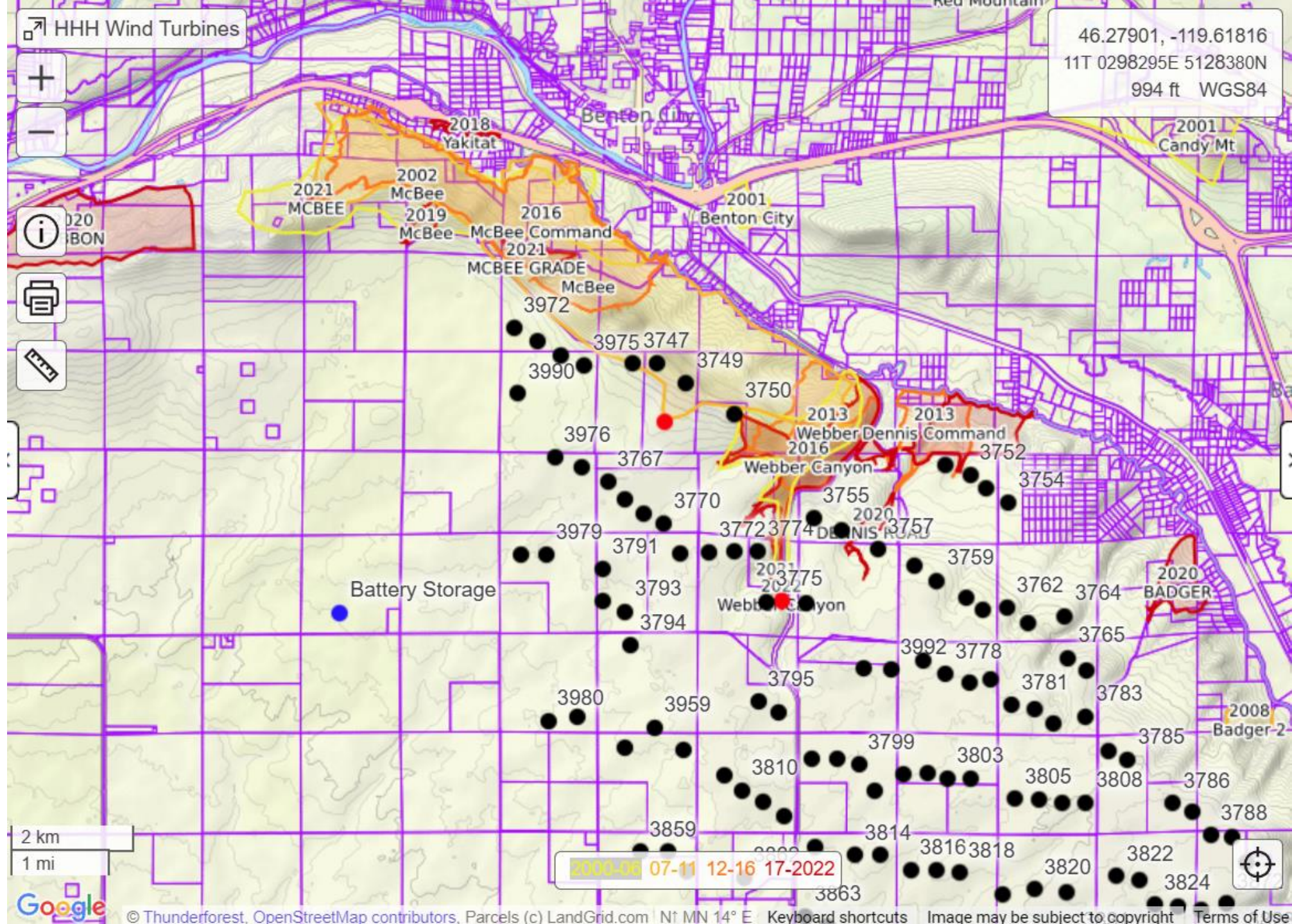


Horse Heaven Hills Wind & Solar Project Fire History Maps with Mileage Range Rings

CalTopo Graphics Prepared for Testimony by Paul J. Krupin

Pink = Parel Ownership



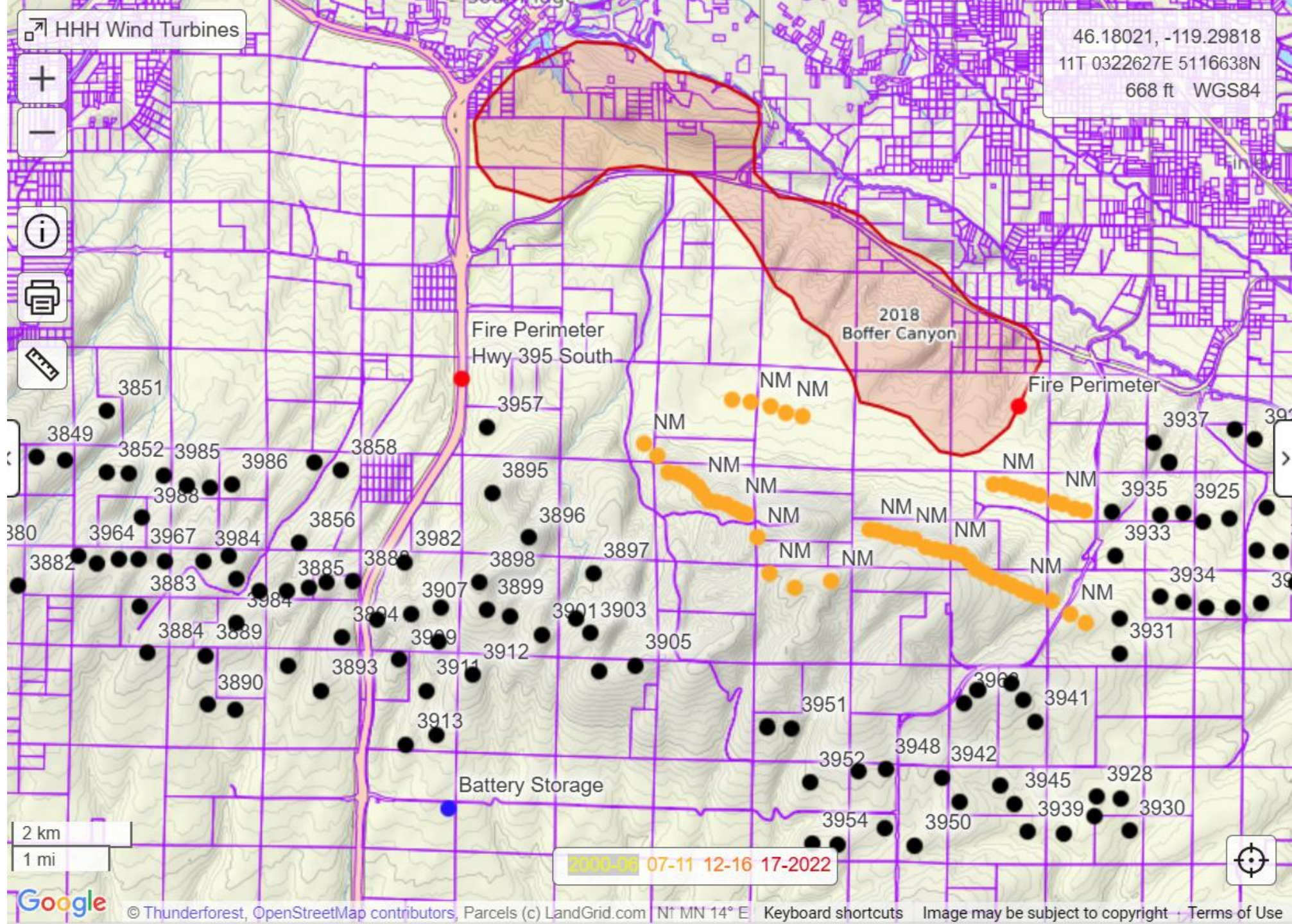
Fire History East

HHH Project south of
Kennewick

Yellow Red =
Fire Zone & Perimeter

Fire History with
Name and Dates

Pink = Parcel Ownership

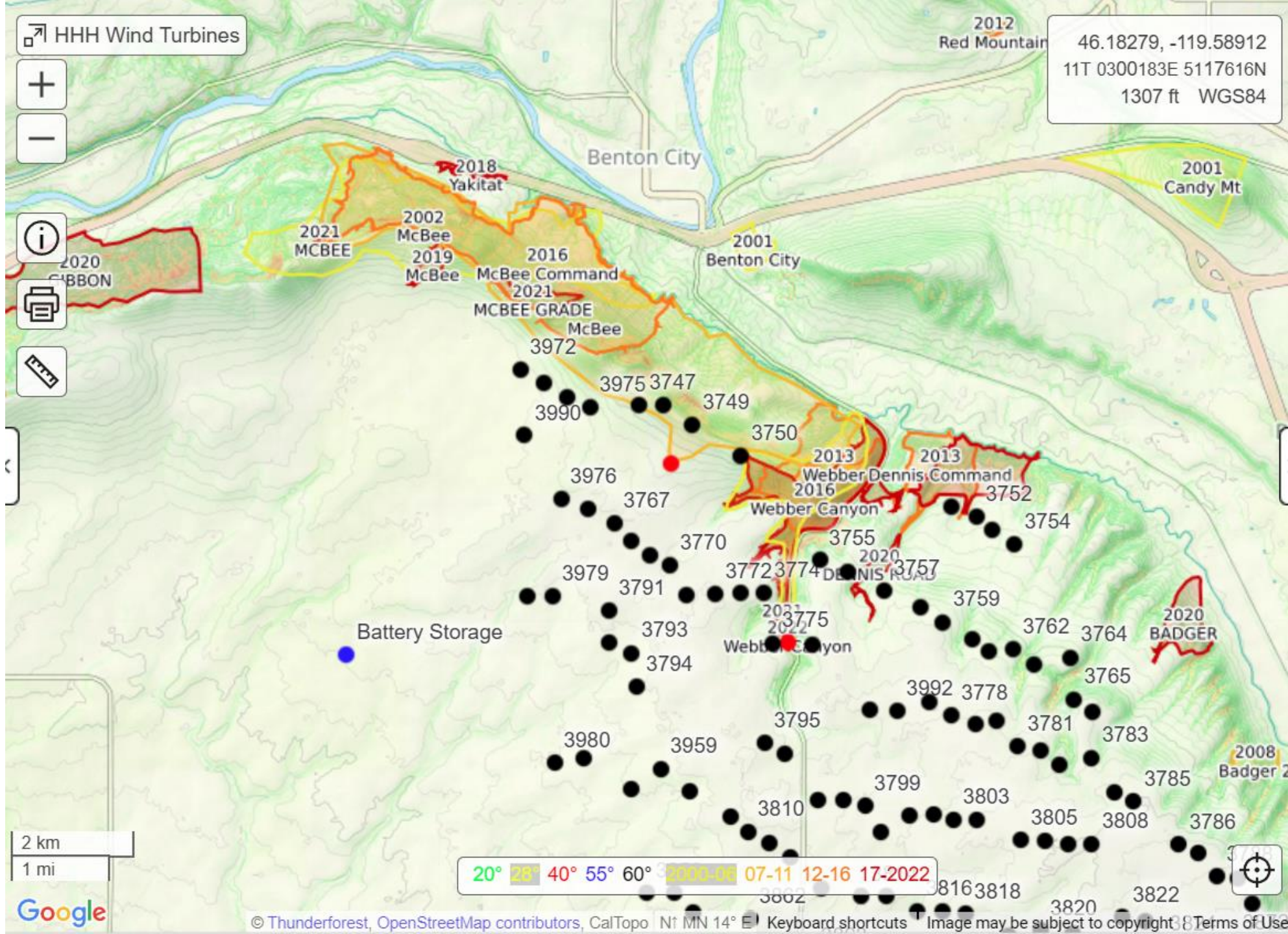


Fire History West

Fire History Fire Name and Dates

Legend

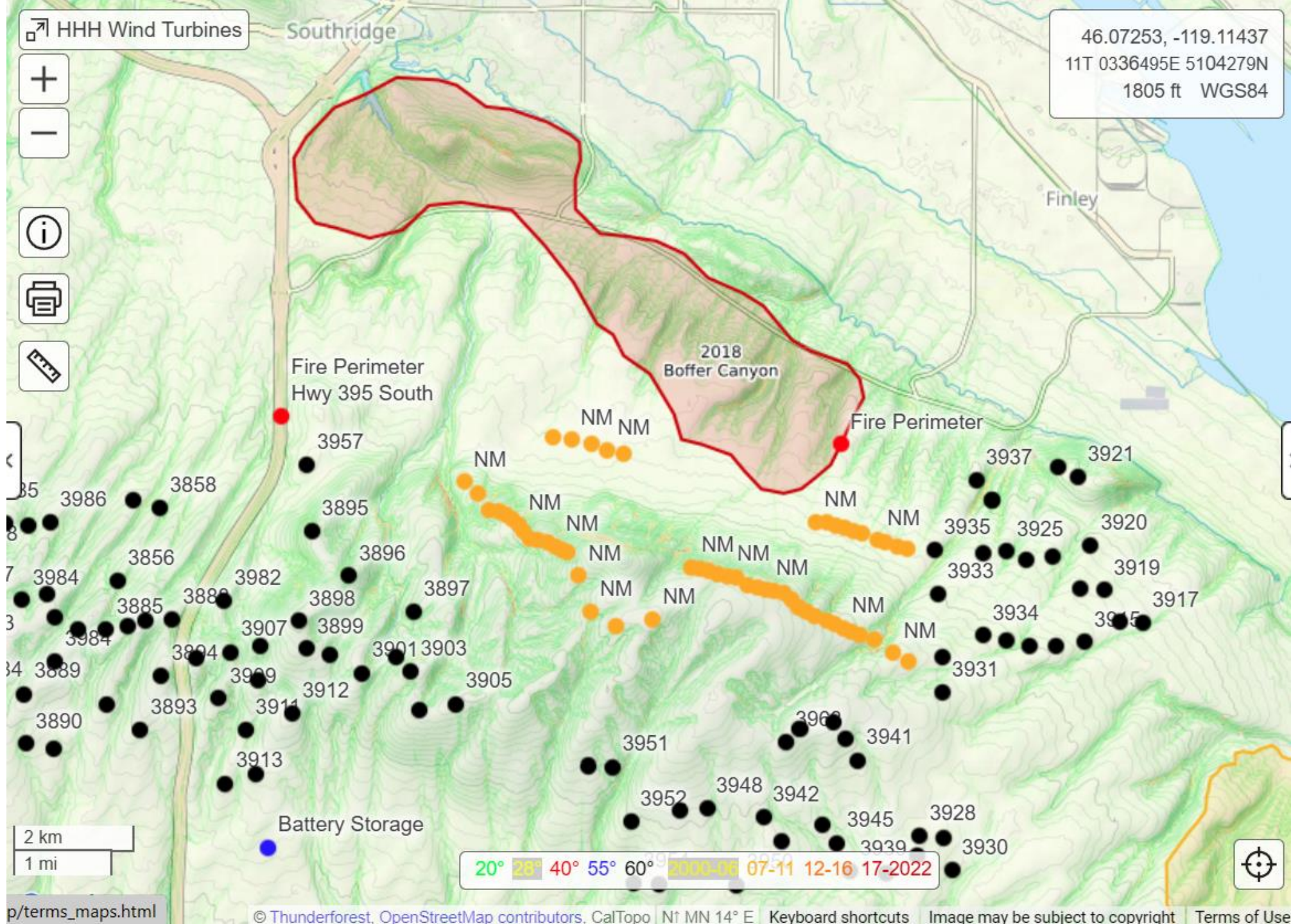
- Wind Turbines
GPS & Number
- Fire Perimeter
Center Location
- Fire Prone
Steep Slopes



Fire History
East

Fire History
Fire Name and Dates

- Legend**
- Wind Turbines
GPS & Number
 - Fire Perimeter
Center Location
 - Fire Prone
Steep Slopes

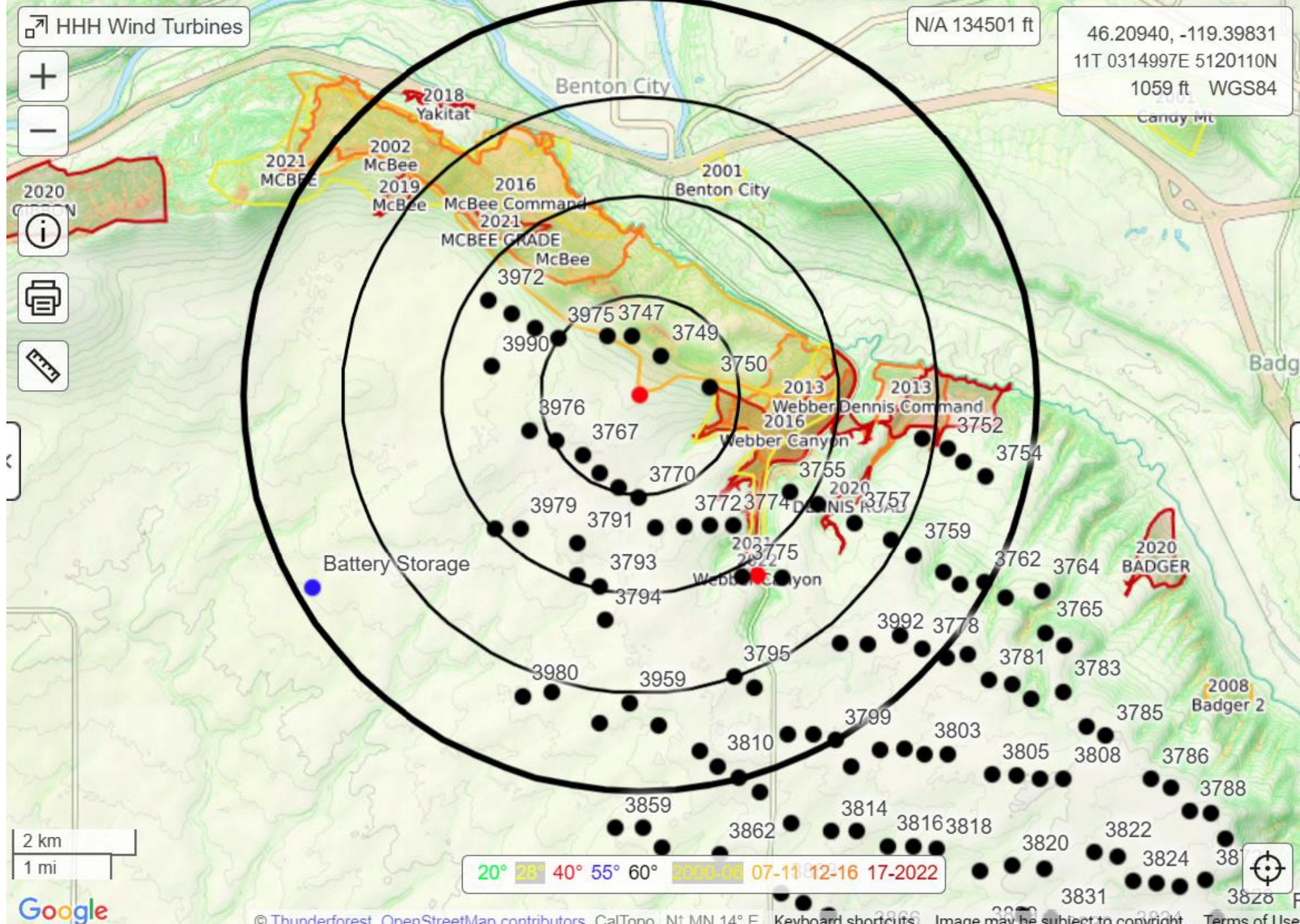


McBee Ridge Fire History & Perimeter

Legend

- Wind Turbines
GPS & Number
- Fire Perimeter
Center Location
- Fire Prone
Steep Slopes

Black Range Rings
1, 2, 3, and 4 miles
from fire perimeter
center

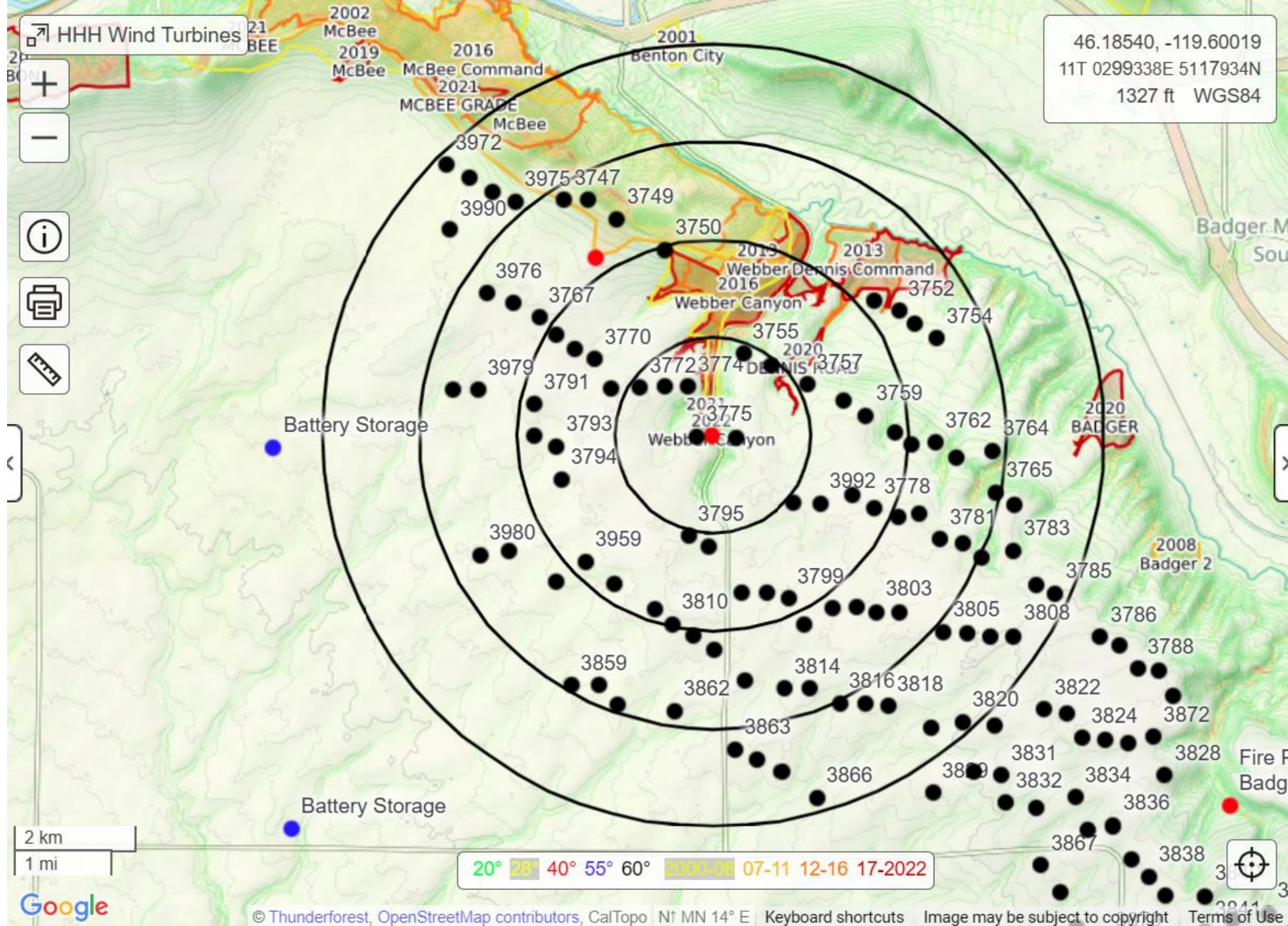


Webber Canyon Fire Perimeter

Legend

- Wind Turbines
GPS & Number
- Fire Perimeter
Center Location
- Fire Prone
Steep Slopes

Black Range Rings
1, 2, 3, and 4 miles
from fire perimeter
center

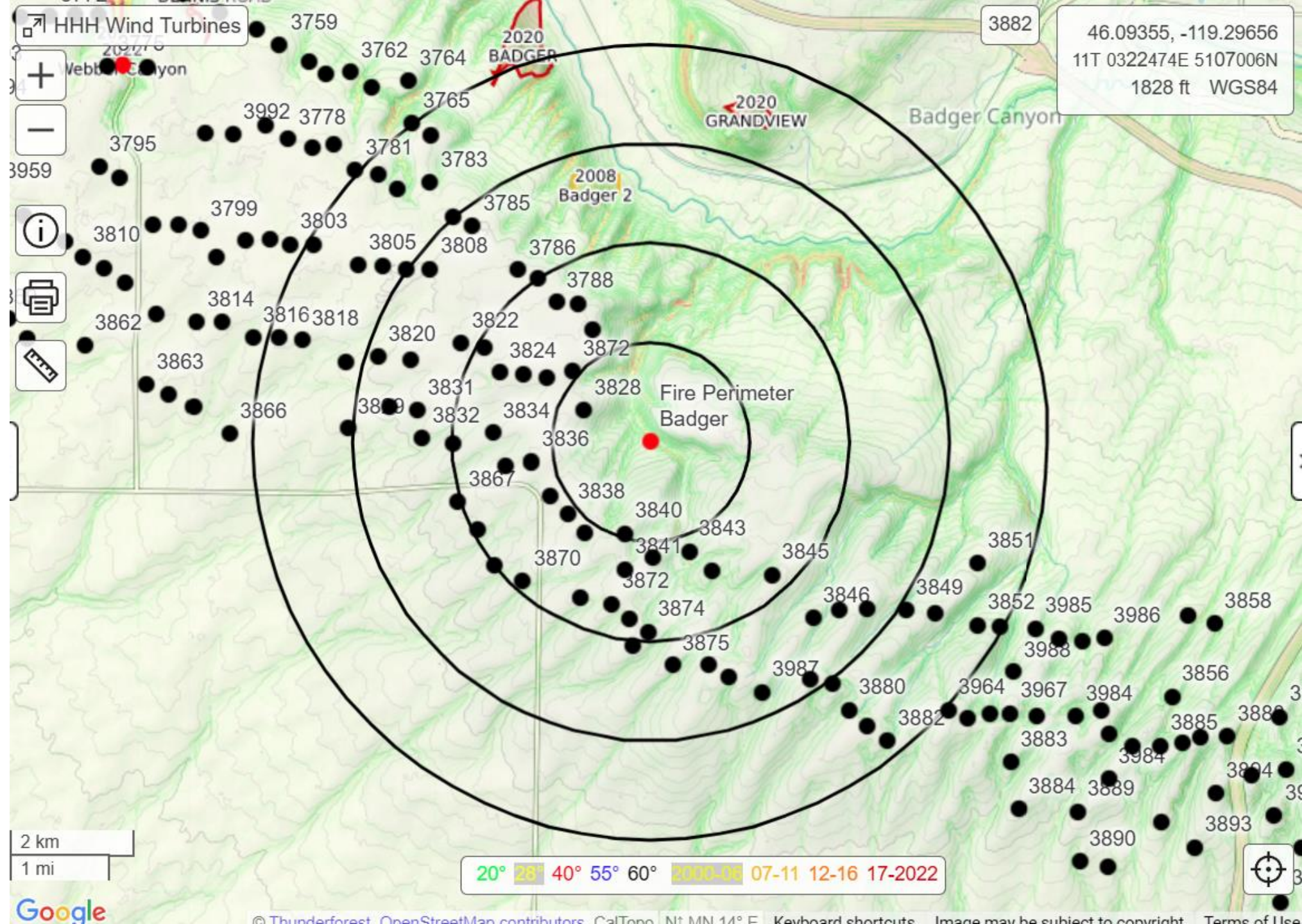


Badger Canyon Fire Perimeter

Legend

- Wind Turbines
GPS & Number
- Fire Perimeter
Center Location
- Fire Prone
Steep Slopes

Black Range Rings
1, 2, 3, and 4 miles
from fire perimeter
center

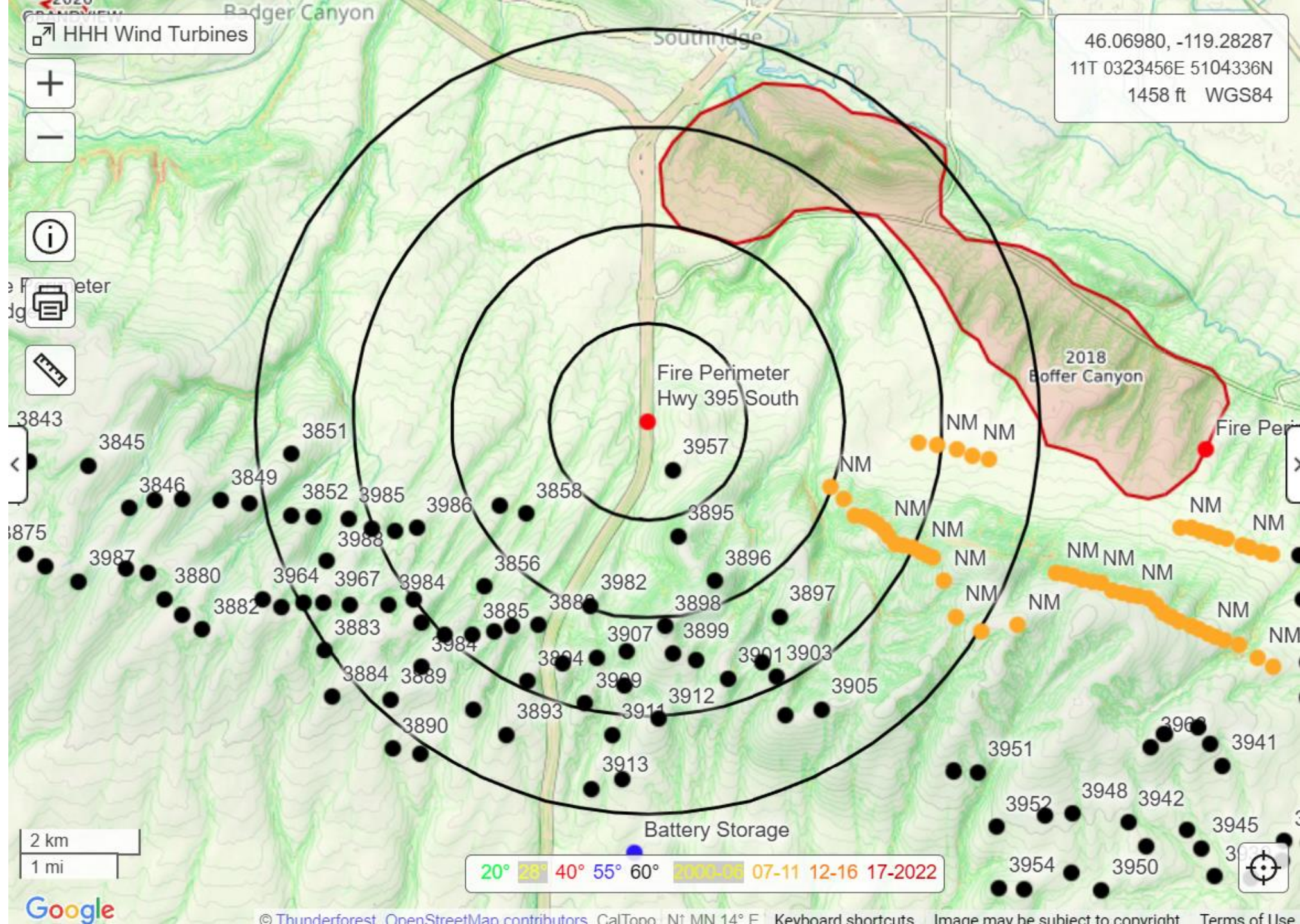


Highway 395 Fire Perimeter

Legend

- Wind Turbines
GPS & Number
- Fire Perimeter
Center Location
- Fire Prone
Steep Slopes

Black Range Rings
1, 2, 3, and 4 miles
from fire perimeter
center



Finley Fire Perimeter

Legend

- Wind Turbines
GPS & Number
- Fire Perimeter
Center Location
- Fire Prone
Steep Slopes

Black Range Rings
1, 2, 3, and 4 miles
from fire perimeter
center

