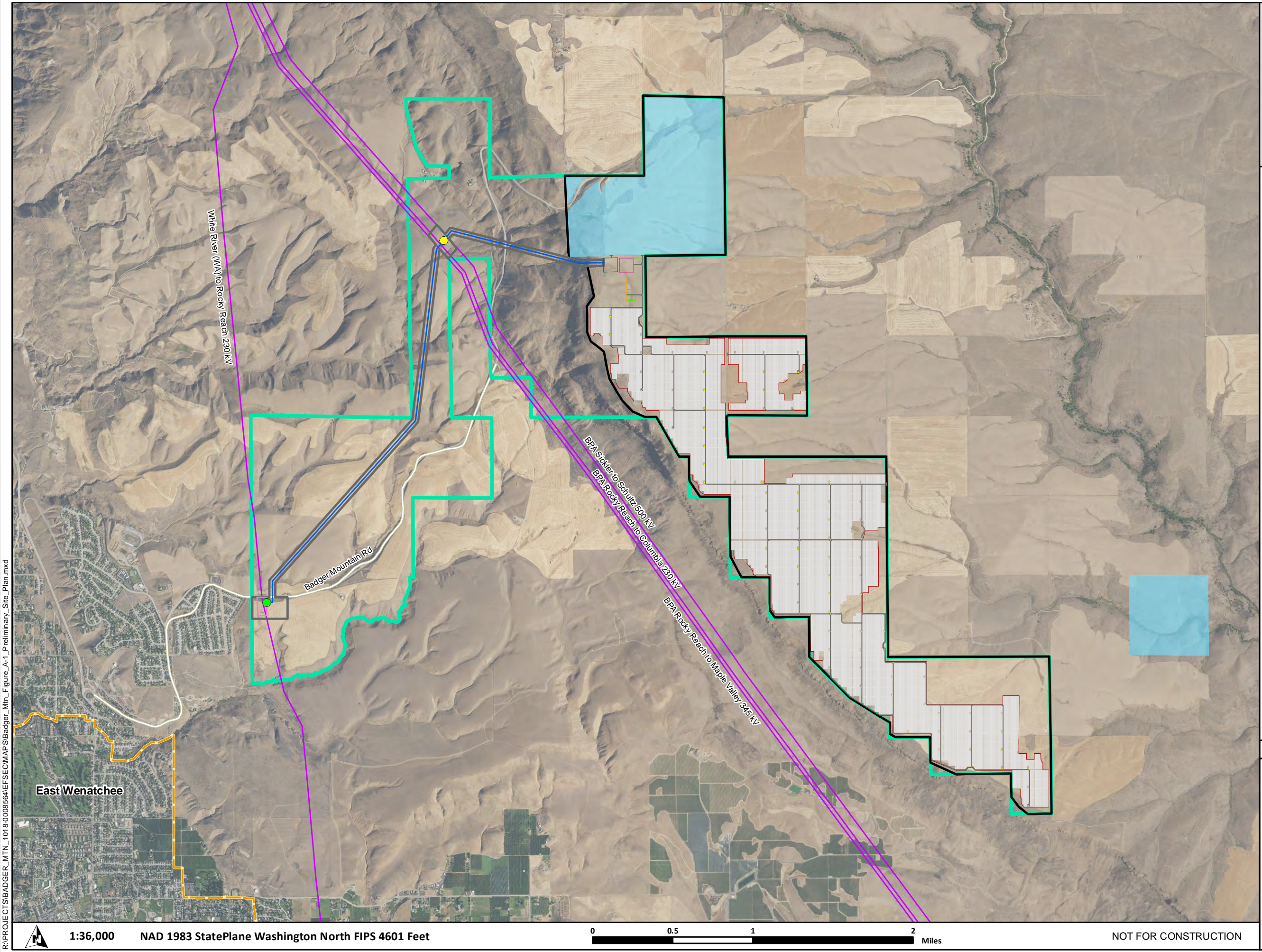


ATTACHMENT A: MAPS

This page intentionally left blank.



**Badger Mountain
Solar Energy Project**

**Figure A-1
Preliminary Site Plan**

DOUGLAS COUNTY, WASHINGTON

- Project Lease Boundary (4,399 acres)
- Project Area (2,390 acres)
- Solar Array Micrositing Area (2,274 acres)
- Gen-tie Micrositing Corridor (116 acres)
- Option 1 Point of Interconnect
- Option 2 Point of Interconnect
- Proposed Project Components
 - Solar Array
 - Inverters
 - Perimeter Fence
 - Project Service Road
 - O&M Building
 - Collector Substation
 - Battery Energy Storage System
 - 230 kV Gen-tie Line
 - Switchyard
 - Temporary Staging Area
- Basemap Features
 - Existing Transmission
 - City Limits
 - State Lands



Data Sources

Avangrid-Project Boundary;
USDA-NAIP Imagery
Ventyx Transmission

Reference Map



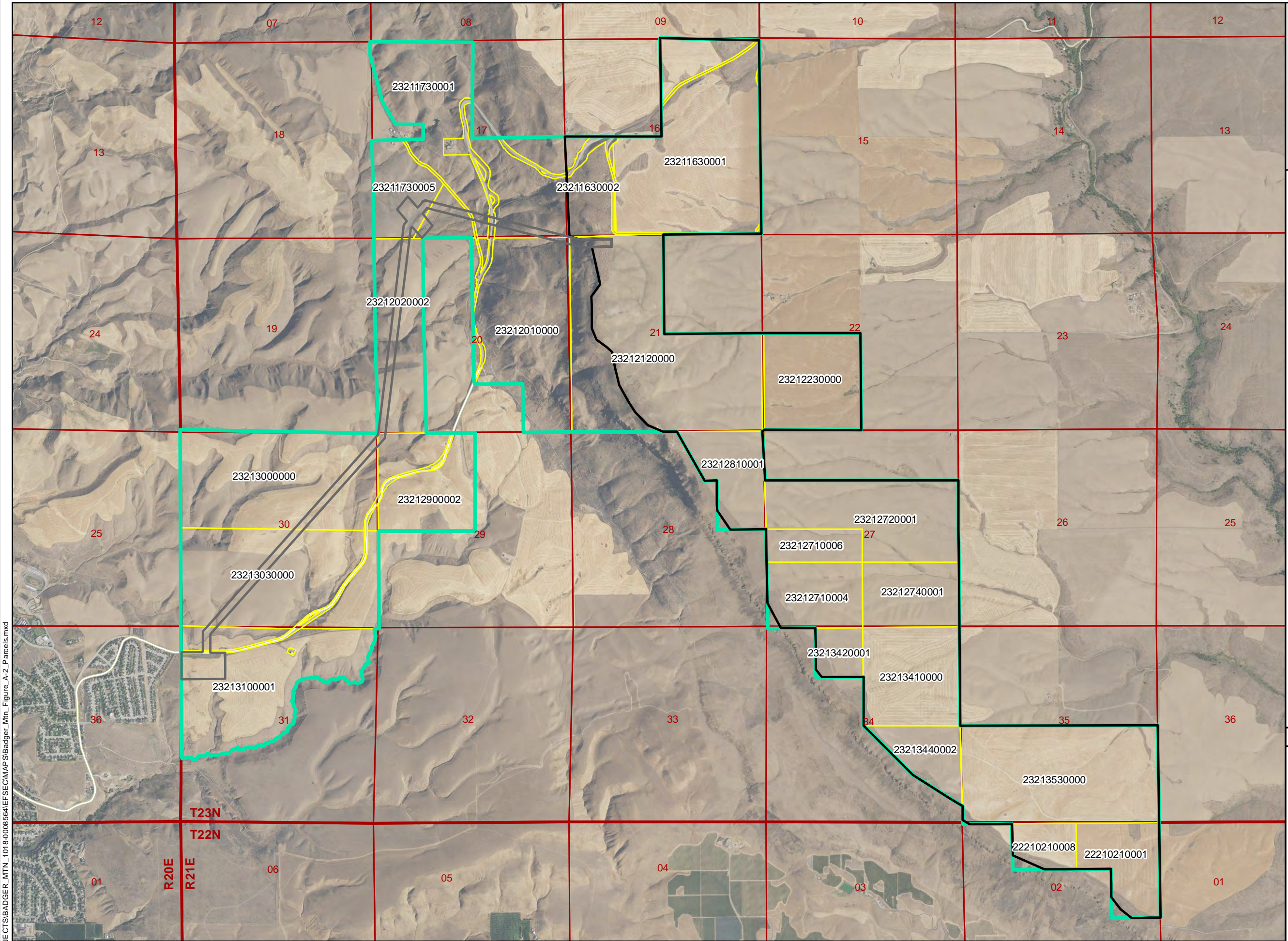
1:36,000 NAD 1983 StatePlane Washington North FIPS 4601 Feet



NOT FOR CONSTRUCTION

R:\PROJECTS\BADGER_MTN_1018-0008564\EFSECMAPS\Badger_Mtn_Figure A-1_Preliminary_Site_Plan.mxd

R:\PROJECTS\BADGER_MTN_1018-0008564\EFSECMAPS\Badger_Mtn_Figure A-2_Parcels.mxd



**Badger Mountain
Solar Energy Project**

**Figure A-2
Project Assessor Parcels**

DOUGLAS COUNTY, WASHINGTON

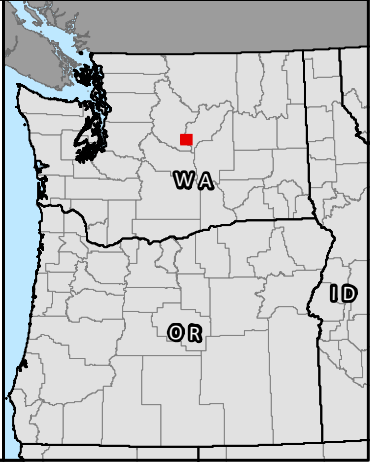
- Project Lease Boundary
- Solar Array Micrositing Area
- Gen-tie Micrositing Corridor
- Township/Range Boundary
- Section Boundary
- Assessor Parcels



Data Sources

Avangrid-Project Boundary;
USDA-NAIP Imagery
Douglas County Parcels

Reference Map



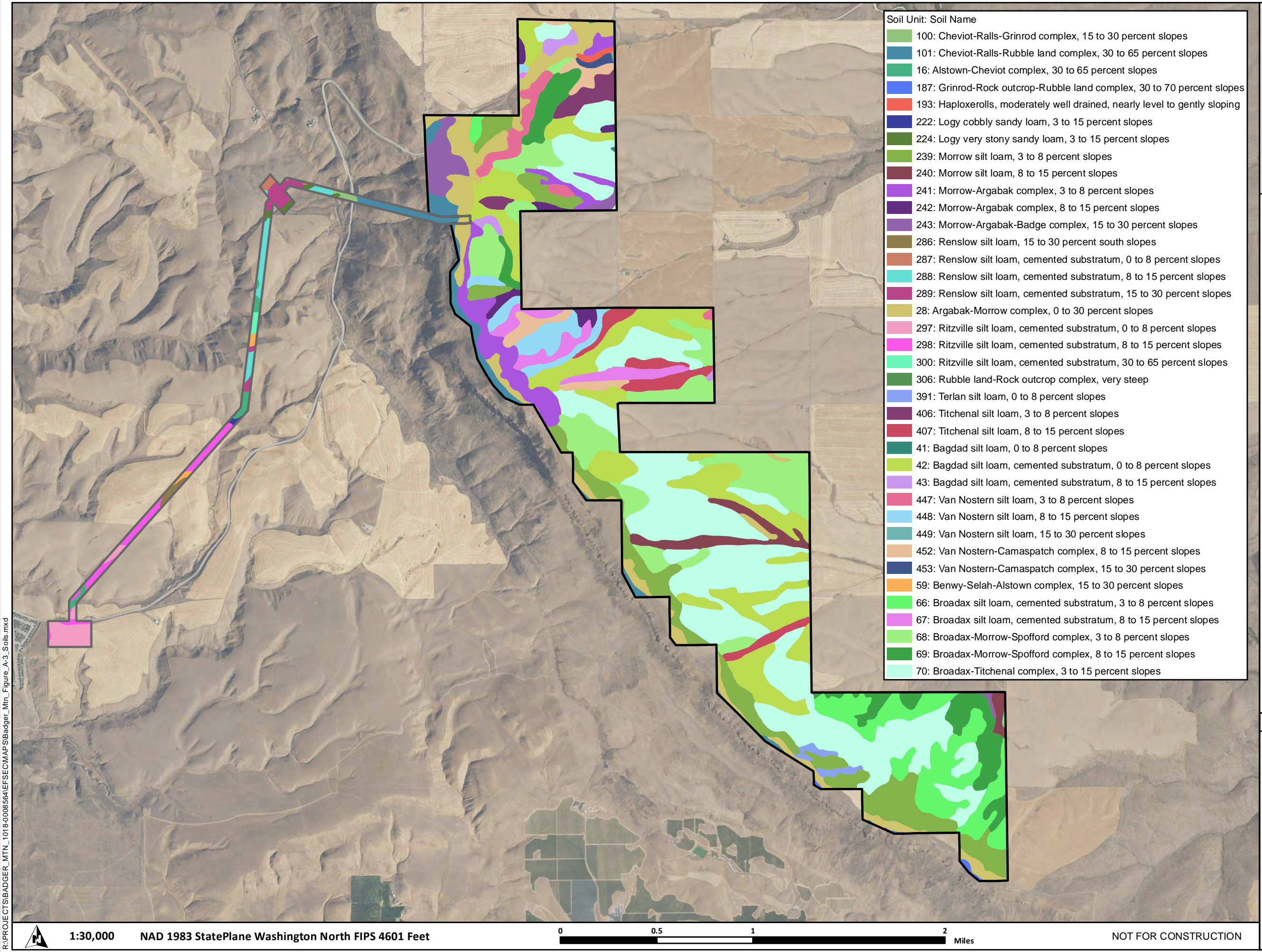
1:30,000

NAD 1983 StatePlane Washington North FIPS 4601 Feet



NOT FOR CONSTRUCTION

R:\PROJECTS\BADGER_MTN_1018-0008564\EFSECMAPS\Badger_Mtn_Figure_A-3_Soils.mxd



- Soil Unit: Soil Name
- 100: Cheviot-Ralls-Grinrod complex, 15 to 30 percent slopes
 - 101: Cheviot-Ralls-Rubble land complex, 30 to 65 percent slopes
 - 16: Alstown-Cheviot complex, 30 to 65 percent slopes
 - 187: Grinrod-Rock outcrop-Rubble land complex, 30 to 70 percent slopes
 - 193: Haploxerolls, moderately well drained, nearly level to gently sloping
 - 222: Logy cobbly sandy loam, 3 to 15 percent slopes
 - 224: Logy very stony sandy loam, 3 to 15 percent slopes
 - 239: Morrow silt loam, 3 to 8 percent slopes
 - 240: Morrow silt loam, 8 to 15 percent slopes
 - 241: Morrow-Argabak complex, 3 to 8 percent slopes
 - 242: Morrow-Argabak complex, 8 to 15 percent slopes
 - 243: Morrow-Argabak-Badge complex, 15 to 30 percent slopes
 - 286: Renslow silt loam, 15 to 30 percent south slopes
 - 287: Renslow silt loam, cemented substratum, 0 to 8 percent slopes
 - 288: Renslow silt loam, cemented substratum, 8 to 15 percent slopes
 - 289: Renslow silt loam, cemented substratum, 15 to 30 percent slopes
 - 28: Argabak-Morrow complex, 0 to 30 percent slopes
 - 297: Ritzville silt loam, cemented substratum, 0 to 8 percent slopes
 - 298: Ritzville silt loam, cemented substratum, 8 to 15 percent slopes
 - 300: Ritzville silt loam, cemented substratum, 30 to 65 percent slopes
 - 306: Rubble land-Rock outcrop complex, very steep
 - 391: Terlan silt loam, 0 to 8 percent slopes
 - 406: Titchenal silt loam, 3 to 8 percent slopes
 - 407: Titchenal silt loam, 8 to 15 percent slopes
 - 41: Bagdad silt loam, 0 to 8 percent slopes
 - 42: Bagdad silt loam, cemented substratum, 0 to 8 percent slopes
 - 43: Bagdad silt loam, cemented substratum, 8 to 15 percent slopes
 - 447: Van Nostern silt loam, 3 to 8 percent slopes
 - 448: Van Nostern silt loam, 8 to 15 percent slopes
 - 449: Van Nostern silt loam, 15 to 30 percent slopes
 - 452: Van Nostern-Camaspach complex, 8 to 15 percent slopes
 - 453: Van Nostern-Camaspach complex, 15 to 30 percent slopes
 - 59: Benwy-Selah-Alstown complex, 15 to 30 percent slopes
 - 66: Broadax silt loam, cemented substratum, 3 to 8 percent slopes
 - 67: Broadax silt loam, cemented substratum, 8 to 15 percent slopes
 - 68: Broadax-Morrow-Spofford complex, 3 to 8 percent slopes
 - 69: Broadax-Morrow-Spofford complex, 8 to 15 percent slopes
 - 70: Broadax-Titchenal complex, 3 to 15 percent slopes

Badger Mountain Solar Energy Project

Figure A-3
Soils

DOUGLAS COUNTY, WASHINGTON

- Solar Array Micrositing Area
- Gen-tie Micrositing Corridor





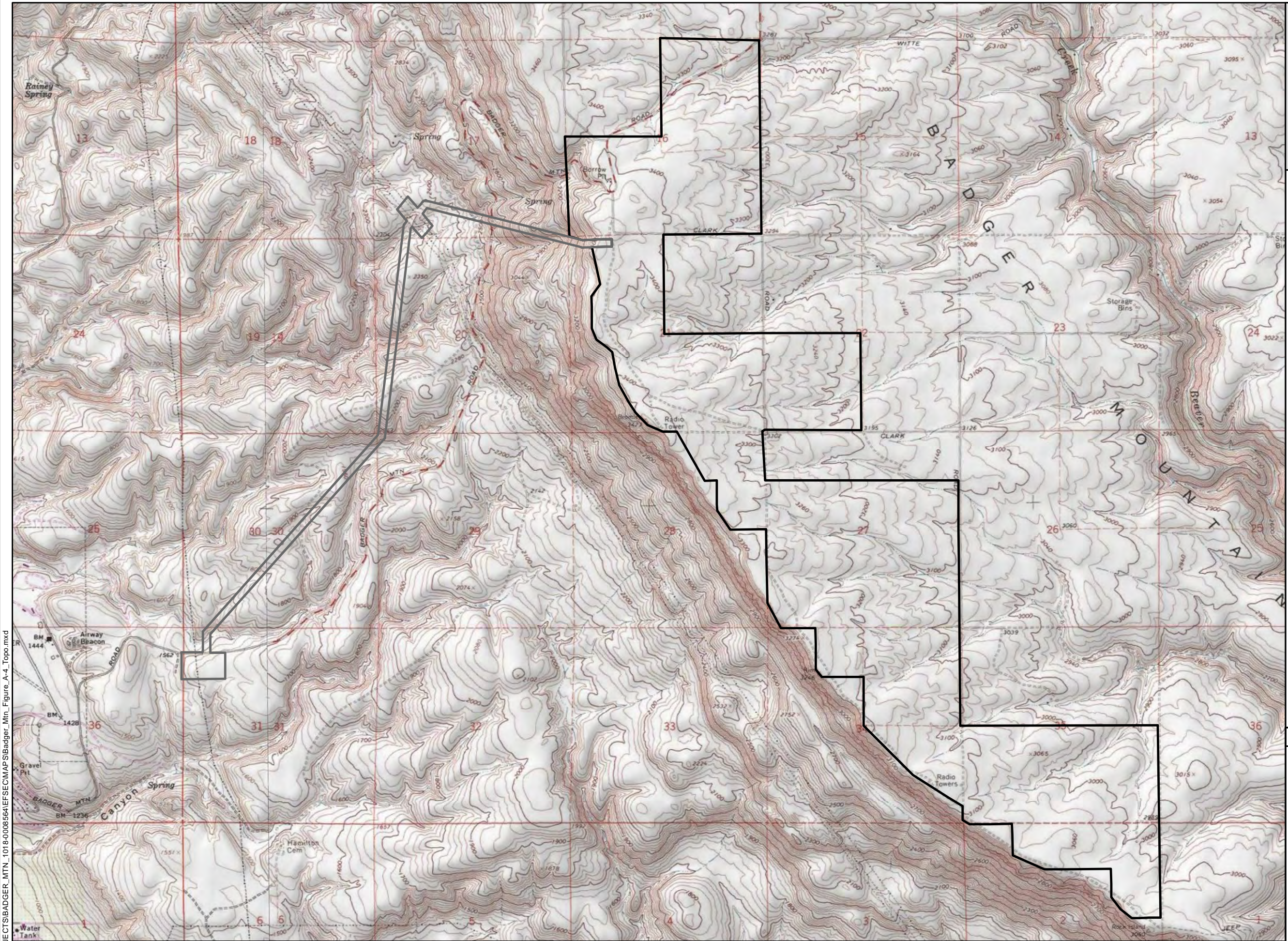
Data Sources	Reference Map
Avangrid-Project Boundary; USDA-NAIP Imagery NRCS Soils	A reference map of Washington state with a red square indicating the project location in Douglas County. The map also shows the borders with Oregon (OR) and Idaho (ID).

Badger Mountain
Solar Energy Project

Figure A-4
Topography

DOUGLAS COUNTY, WASHINGTON

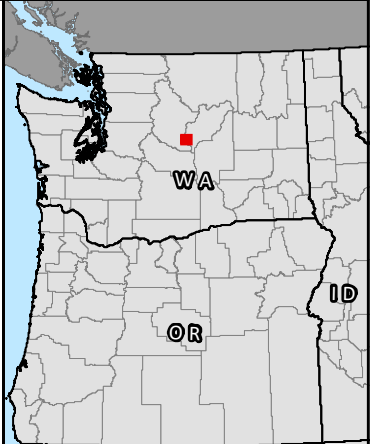
-  Solar Array Micrositing Area
-  Gen-tie Micrositing Corridor



Data Sources

Avangrid-Project Boundary;
USGS Topographic Map

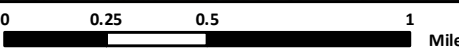
Reference Map



R:\PROJECTS\BADGER_MTN_1018-008564\EFSECMAPS\Badger_Mtn_Figure A-4_Topo.mxd

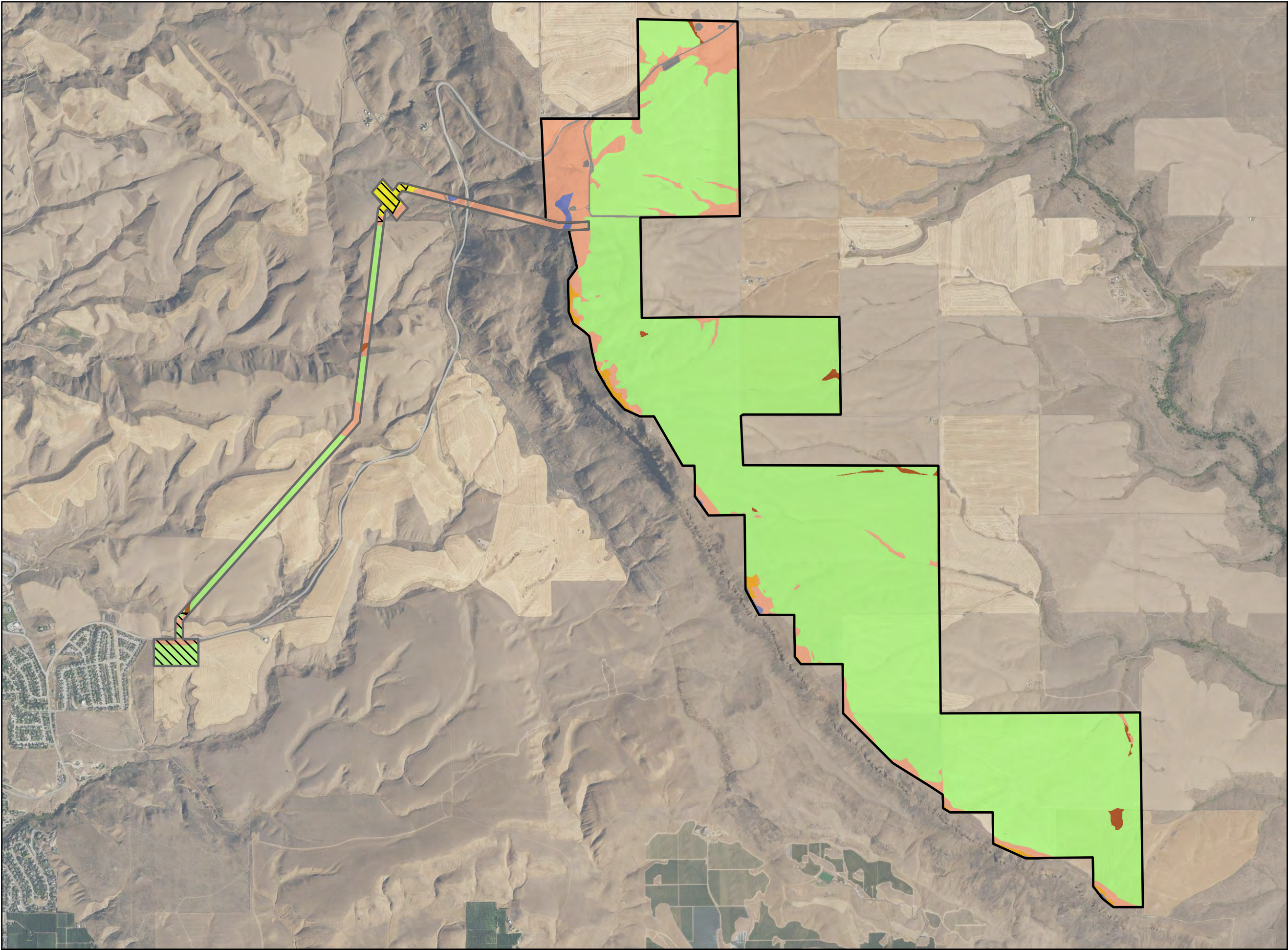


1:30,000 NAD 1983 StatePlane Washington North FIPS 4601 Feet



NOT FOR CONSTRUCTION

R:\PROJECTS\BADGER_MTN_1018-0008564\EFSECMAPS\Badger_Mtn_Figure A-5_Habitat.mxd



**Badger Mountain
Solar Energy Project**

**Figure A-5
Habitat Types within
the Project Area**

DOUGLAS COUNTY, WASHINGTON

- Solar Array Micrositing Area
- Gen-tie Micrositing Corridor
- Area not Accessible*
- Habitat Type**
- Agriculture
- Developed
- Dwarf Shrub-steppe
- Non-native Grassland and Forbland
- Planted Grassland
- Shrub-steppe
- Talus

* Site access was not available during the 2021 survey season. While these areas were not visited on foot in 2021, they were viewed from adjacent accessible parcels and public roads.



Data Sources

Avangrid-Project Boundary;
USDA-NAIP Imagery

Reference Map



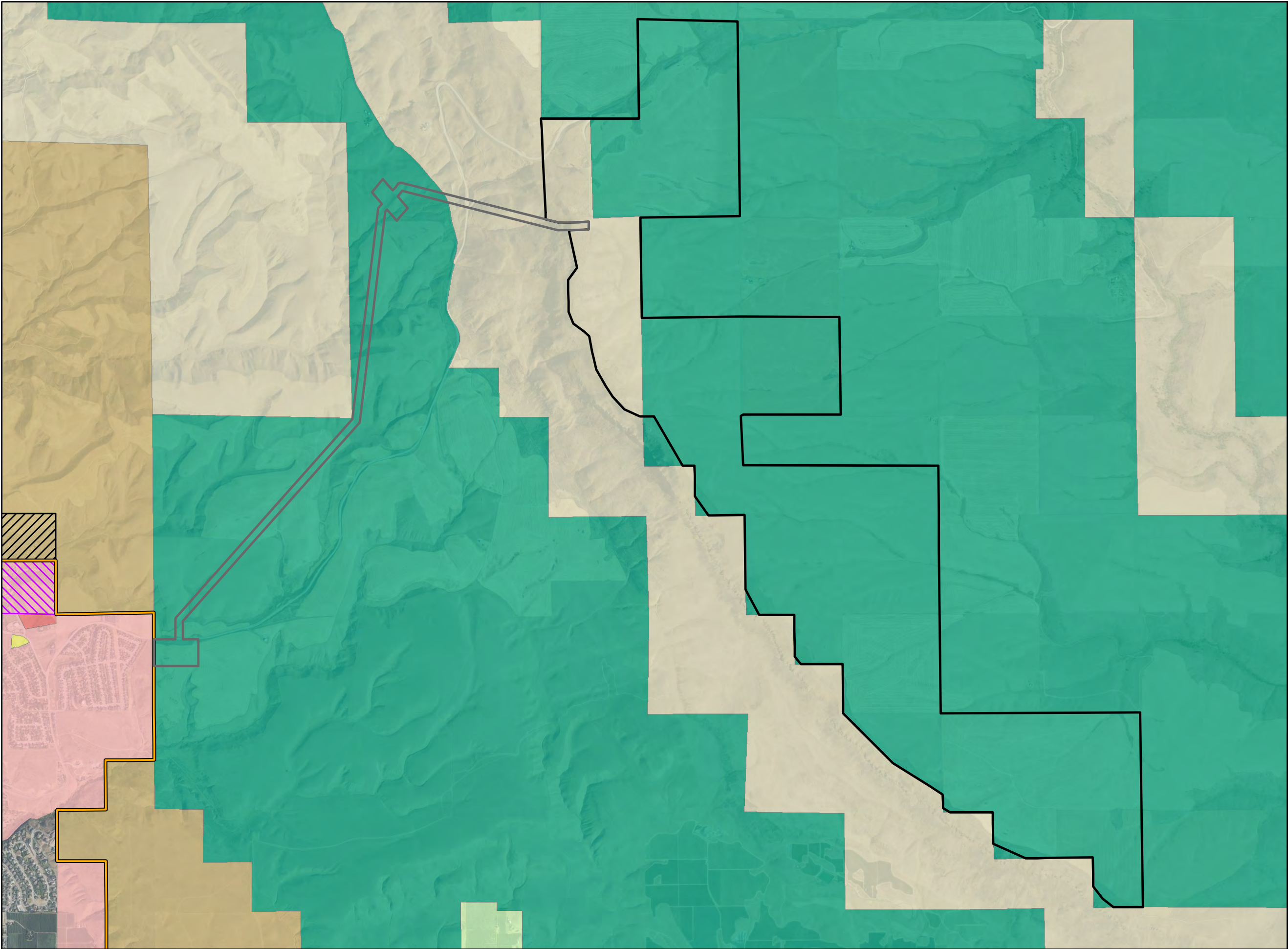
1:30,000

NAD 1983 StatePlane Washington North FIPS 4601 Feet



NOT FOR CONSTRUCTION

R:\PROJECTS\BADGER_MTN_1018-0008564\EFSECMAPS\Badger_Mtn_Figure_A-6_Zoning.mxd



**Badger Mountain
Solar Energy Project**

**Figure A-6
Douglas County
Zoning Districts**

DOUGLAS COUNTY, WASHINGTON

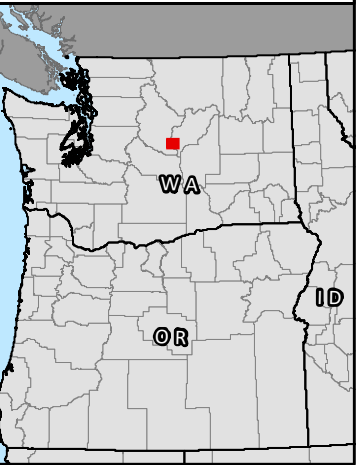
- Solar Array Micrositing Area
- Gen-tie Micrositing Corridor
- Urban Growth Area Boundary
- Douglas County Zoning**
- Commercial Agriculture 10 (AC-10)
- Dryland Agriculture (A-D)
- Low Residential (R-L) - East Wenatchee
- Medium Residential (R-M) - East Wenatchee
- Neighborhood Commercial (C-N) - East Wenatchee
- Recreation Overlay (R-O)
- Recreation Overlay (R-O) - East Wenatchee
- Rural Resource 20 (RR-20)
- Rural Resource 5 (RR-5)



Data Sources

Avangrid-Project Boundary;
USDA-NAIP Imagery
Douglas County

Reference Map



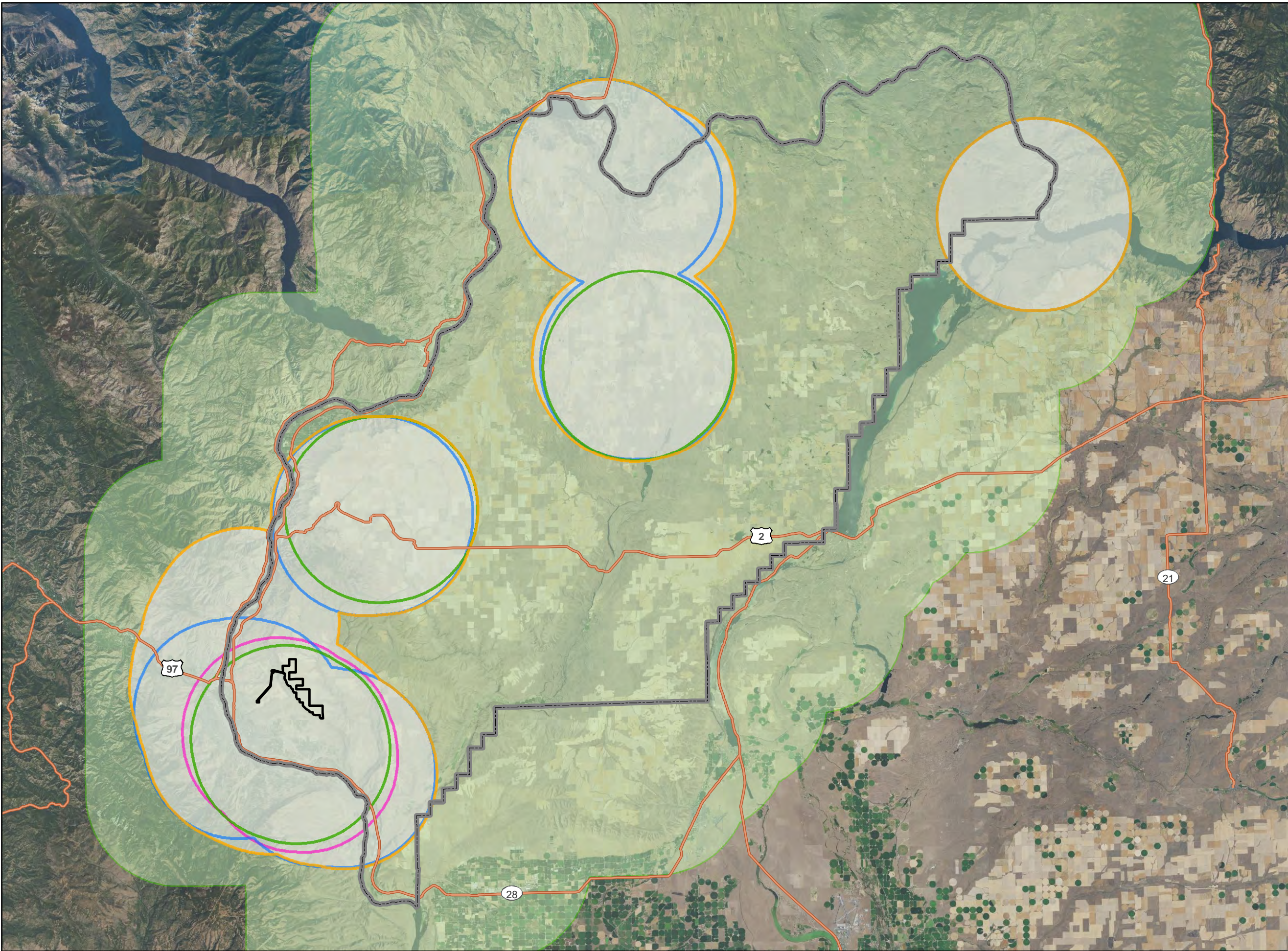
1:30,000

NAD 1983 StatePlane Washington North FIPS 4601 Feet



NOT FOR CONSTRUCTION

R:\PROJECTS\BADGER_MTN_1018-0008564\EFSECMAPS\Badger_Mtn_Figure A-7_Potential Buffers_Douglas County.mxd



**Badger Mountain
Solar Energy Project**

**Figure A-7
Interim Control Buffers**

DOUGLAS COUNTY, WASHINGTON

- Project Area
- Douglas County Boundary
- 7-mile Buffer from Urban Growth Area Boundary
- 7-mile Buffer from City Limits
- 7-mile Buffer from Airport Boundaries
- 7-mile Buffer from Pangborn Airport Overlay Boundary
- 7-mile Buffer from Habitat associated with Sensitive, Candidate, Threatened or Endangered Plants or Wildlife as identified on State or Federal list*

*Priority Habitat and Species information is generalized in accordance with WDFW's Releasing Sensitive Fish and Wildlife Information Policy – 5210, as received August 9, 2021. The information is generalized to the township, quarter-township, and section layers depending on the species or habitat and includes WDFW information for state and federally listed fish and wildlife species, and candidate species. The 7-mile buffer is applied to these generalized locations. Depending on the County's intended interpretation, additional data sources may need to be requested to cover all potentially included resources throughout the County.



Data Sources

Avangrid-Project Boundary;
USDA-NAIP Imagery
Douglas County GIS
WADFW PHS

Reference Map



1:450,000 NAD 1983 StatePlane Washington North FIPS 4601 Feet



NOT FOR CONSTRUCTION