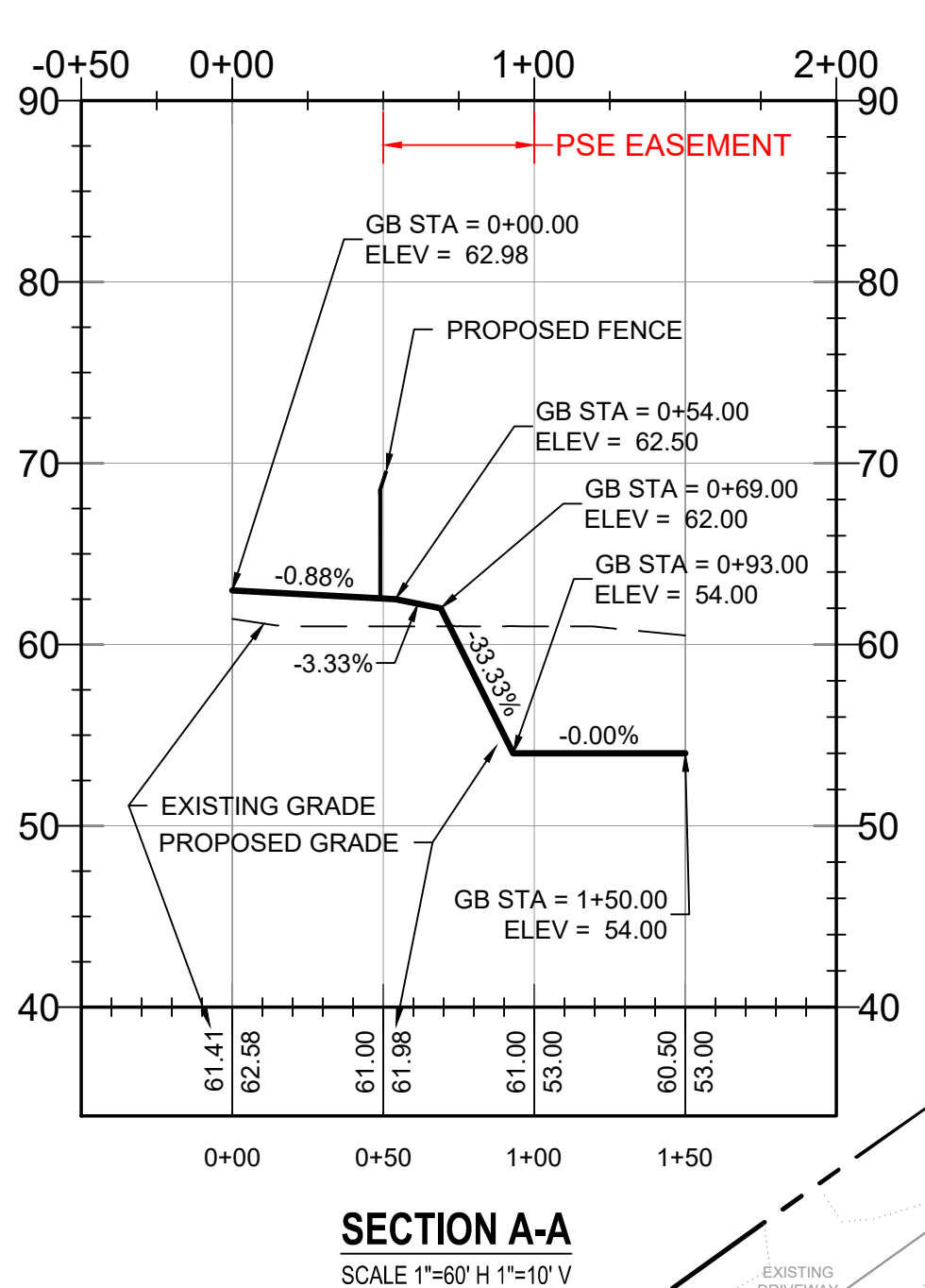


STRUCTURE NAME:	DETAILS:
CB-01	RIM = 63.45 INV IN = 60.78 INV OUT = 60.78
CB-02	RIM = 62.88 INV IN = 61.35 INV OUT = 60.21
CB-03	RIM = 63.45 INV IN = 60.78 INV OUT = 58.52
CB-04	RIM = 62.67 INV IN = 59.09
CB-05	RIM = 62.71 INV IN = 59.66 INV OUT = 58.52
CB-06	RIM = 62.62 INV IN = 59.21 INV IN = 59.09 INV OUT = 57.89
CB-07	RIM = 62.82 INV OUT = 58.46
CB-08	RIM = 62.84 INV IN = 59.03 INV OUT = 57.89
CB-09	RIM = 62.62 INV IN = 58.52 INV IN = 58.46 INV OUT = 57.89
CB-10	RIM = 62.82 INV OUT = 58.46
CB-11	RIM = 62.84 INV IN = 59.03 INV OUT = 57.89
CB-12	RIM = 62.62 INV IN = 58.46 INV OUT = 57.89
CB-13	RIM = 63.18 INV OUT = 59.82
CB-14	RIM = 62.84 INV IN = 59.07 INV OUT = 59.07
CB-15	RIM = 62.86 INV IN = 58.49 INV OUT = 57.92

STRUCTURE NAME:	DETAILS:
CB-16	RIM = 62.97 INV IN = 58.49 INV OUT = 57.92
CB-17	RIM = 62.11 INV OUT = 58.09
CB-18	RIM = 62.98 INV OUT = 58.69
CB-19	RIM = 62.11 INV IN = 58.18 INV OUT = 58.18
CB-20	RIM = 62.11 INV IN = 57.70 INV OUT = 57.70
OUT-1	RIM = 59.17 INV IN = 57.50
OUT-2	RIM = 59.17 INV IN = 57.50
OUT-3	RIM = 59.17 INV IN = 57.50
OUT-4	RIM = 59.17 INV IN = 57.50
OUT-05-CTL	RIM = 61.00 INV OUT = 57.50
OUT-06	RIM = 58.69 INV IN = 57.02
SDMH-01	RIM = 62.11 INV IN = 57.73 INV OUT = 57.73
SWMH-02	RIM = 61.23 INV IN = 57.34 INV OUT = 57.34
SWMH-03	RIM = 58.88 INV IN = 57.21 INV OUT = 57.21
SWMH-04	RIM = 58.83 INV IN = 57.16 INV OUT = 57.16



ABBREVIATIONS

TW TOP OF WALL
 FL FLOW LINE
 FG FINISHED GRADE
 EG EXISTING GRADE
 GB GRADE BREAK

GRADING NOTES

- EXISTING AND PROPOSED CONTOURS ARE SHOWN AT 1' INTERVALS.
- ALL CUT & FILL SLOPES SHALL BE AT 3:1 UNLESS NOTED OTHERWISE.
- THE TOP LAYER OF UNSUITABLE ORGANIC TOPSOIL MATERIAL WITHIN THE GRADING LIMITS SHALL BE STRIPPED TO A MINIMUM DEPTH OF EIGHTEEN (18) INCHES AND DISPOSED OF OFF SITE.
- FOR GEOTECHNICAL INFORMATION REFER TO THE GEOTECHNICAL ENGINEERING REPORT AND PRELIMINARY PERCOLATION EVALUATION PREPARED BY TERRA-GEO.
- FOR DESIGNATED TRAFFIC AREAS REFER TO GEOTECHNICAL REPORT FOR ADDITIONAL SUBGRADE PREPARATION AND RECOMMENDATIONS.
- GROUNDWATER SEEPAGE WAS OBSERVED IN ALL BORINGS AND TEST PITS BETWEEN 5'-10' BELOW THE EXISTING SURFACE.
- GRADING IS BASED ON THE ASSUMED BASE FLOOD ELEVATION(BFE) OF 61.3'. FOUNDATIONS SHALL BE AT LEAST 1.0' ABOVE BFE.
- RESULTS FROM THE SITE FLOOD STUDY COMPLETED BY POWER ENGINEERS HAS SHOWN THE PROPOSED DEVELOPMENT HAS NOT INCREASED THE WATER SURFACE ELEVATION OF THE BFE MORE THAN ONE FOOT AT ANY POINT.
- TOTAL DISTURBANCE AREA = 575,000 S.F. / 13.20 ACRES.
- THE STORMWATER MANAGEMENT POND IS TO BE BUILT IN ACCORDANCE WITH THE CURRENT EDITION OF THE WASHINGTON STATE DEPARTMENT OF ECOLOGY, STORMWATER MANAGEMENT MANUAL FOR WESTERN WASHINGTON (SWMWW).
- ALL ROADWAYS WITHIN THE PSE AND BPA EASEMENT AREAS ARE TO BE CONSTRUCTED TO THE HS-20 LOADING STANDARD.
- REFER TO SHEETS L7 AND L8 IN THE FINAL CONCEPTUAL RIPARIAN AND FISH HABITAT ENHANCEMENT PLAN FOR FISH HABITAT ENHANCEMENT GRADING.

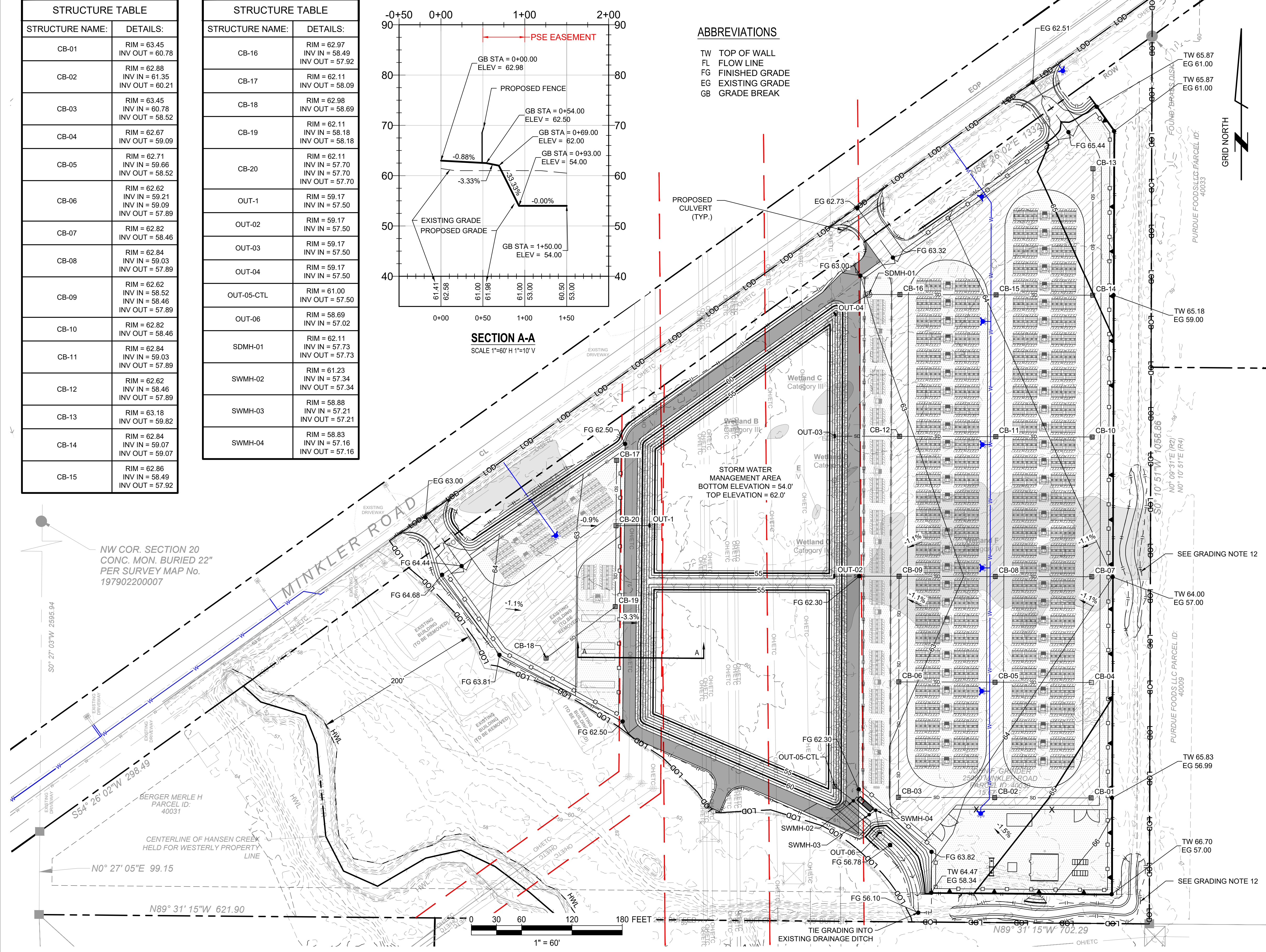
LEGEND

- PROPERTY BOUNDARY LINE
- PARCEL LINES
- EXISTING OVERHEAD POWER
- SETBACK LINE
- EXISTING POWER POLE
- EXISTING POWER LINE STRUCTURE
- RETAINING WALL
- STORM DRAIN PIPE
- STORM DRAIN INLET
- CHAIN-LINK FENCE
- PROPOSED 12' HIGH SOLID WALL FENCE
- PROPOSED 14' OR 16' HIGH SOLID WALL FENCE
- PROPOSED BATTERY ENCLOSURE UNITS
- MV TRANSFORMER
- FUTURE AUGMENTATION BESS UNITS
- BESS BATTERY ENERGY STORAGE SYSTEM
- ROAD SURFACING
- GRAVEL SURFACING
- RIPRAP
- POND ASPHALT SPILLWAY
- EXISTING MAJOR CONTOUR
- EXISTING MINOR CONTOUR
- MAJOR CONTOUR
- MINOR CONTOUR
- 1.0% GRADING SLOPE ARROW
- FLOW LINE
- DAYLIGHT LINE
- DISTURBANCE LIMITS

ESTIMATED QUANTITIES

*QUANTITIES LISTED ARE ESTIMATES ONLY. CONTRACTORS TO CALCULATE THEIR OWN BID QUANTITIES. ESTIMATE QUANTITIES ARE IN BANK CUBIC YARDS WITH NO ALLOWANCE FOR SHRINK OR SWELL.

TOPSOIL REMOVE & EXPORT (18")	23,000	CY
TOPSOIL REMOVE, STOCKPILE & REUSE (8")	3,000	CY
GENERAL EXCAVATION (EXPORT)	14,900	CY
FILL MATERIAL (IMPORT)	73,500	CY
RIP-RAP	1,000	CY
STORM DRAIN PIPE	2,400	LF
STORM DRAIN INLET	20	EA
STORM DRAIN MANHOLE	4	EA
STORMWATER MANAGEMENT OUTLET STRUCTURE	1	EA
STORMWATER MANUFACTURED TREATMENT DEVICE	1	EA
RETAINING WALL (AVERAGE HEIGHT = 7')	1,180	LF



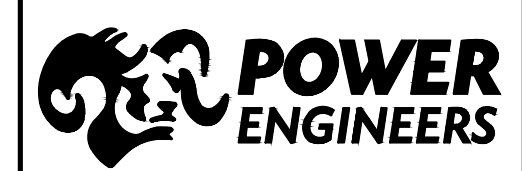
THIS DRAWING WAS PREPARED BY POWER ENGINEERS, INC. FOR A SPECIFIC PROJECT. TAKING INTO CONSIDERATION THE SPECIFIC AND UNIQUE REQUIREMENTS OF THE PROJECT, REUSE OF THIS DRAWING OR ANY INFORMATION CONTAINED IN THIS DRAWING FOR ANY PURPOSE IS PROHIBITED UNLESS WRITTEN PERMISSION FROM BOTH POWER AND POWER'S CLIENT IS GRANTED.

PRELIMINARY
NOT FOR CONSTRUCTION

REV	REVISIONS	DATE	DRN	DSGN	CKD	APPD
C	ISSUED FOR INFORMATION	2/12/2026	BTB	BTB	TWH	TWH
B	ISSUED FOR INFORMATION	9/11/2025	BTB	BTB	TWH	TWH
A	ISSUED FOR INFORMATION	4/24/2024	BTB	BTB	TJG	TWH

SCALE: 1" = 60'

FOR 22X34 DWG ONLY



GOLDENEYE BATTERY STORAGE, LLC	JOB NUMBER	REV
GOLDENEYE BESS PROJECT 200MW/800MWH BESS	180161	△
PRELIMINARY GRADING PLAN	DRAWING NUMBER	C2-1