

Figure 6. Comparison of estimated annual diurnal raptor use during fixed-point large bird use surveys at the Four Mile Wind Project from June 5, 2018 – May 29, 2019 and diurnal raptor use at other Oregon and Washington Wind Resource Areas with similarly collected data.

This screenshot is from Appendix K PDF page 349

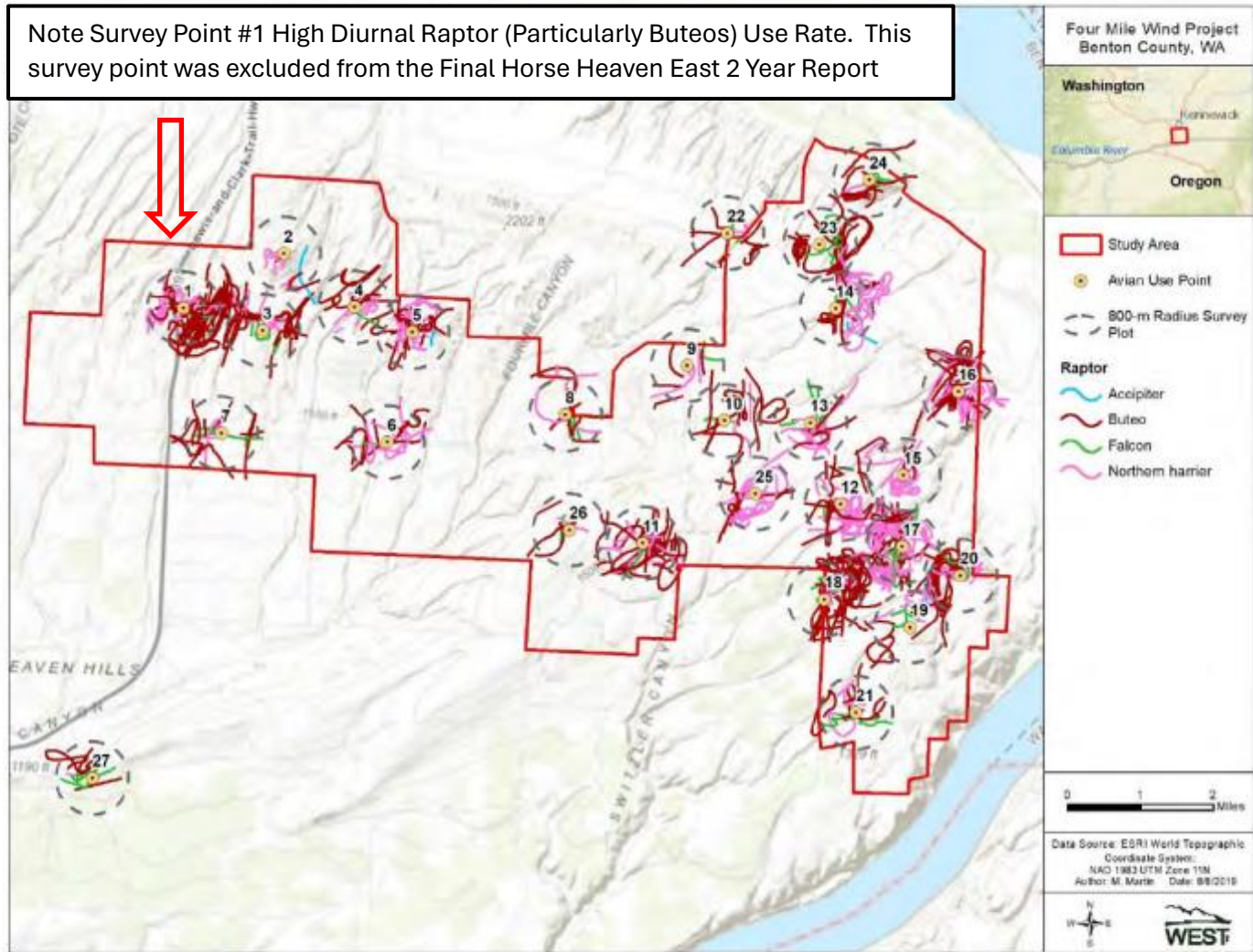


Figure 5b. Flight paths of diurnal raptor subtypes recorded during large bird surveys at the Four Mile Wind Project Study Area from June 5, 2018 to May 29, 2019.

or

Attachment 3-From Final ASC, Figure 2.3-1 With location of raptor high use survey point.

