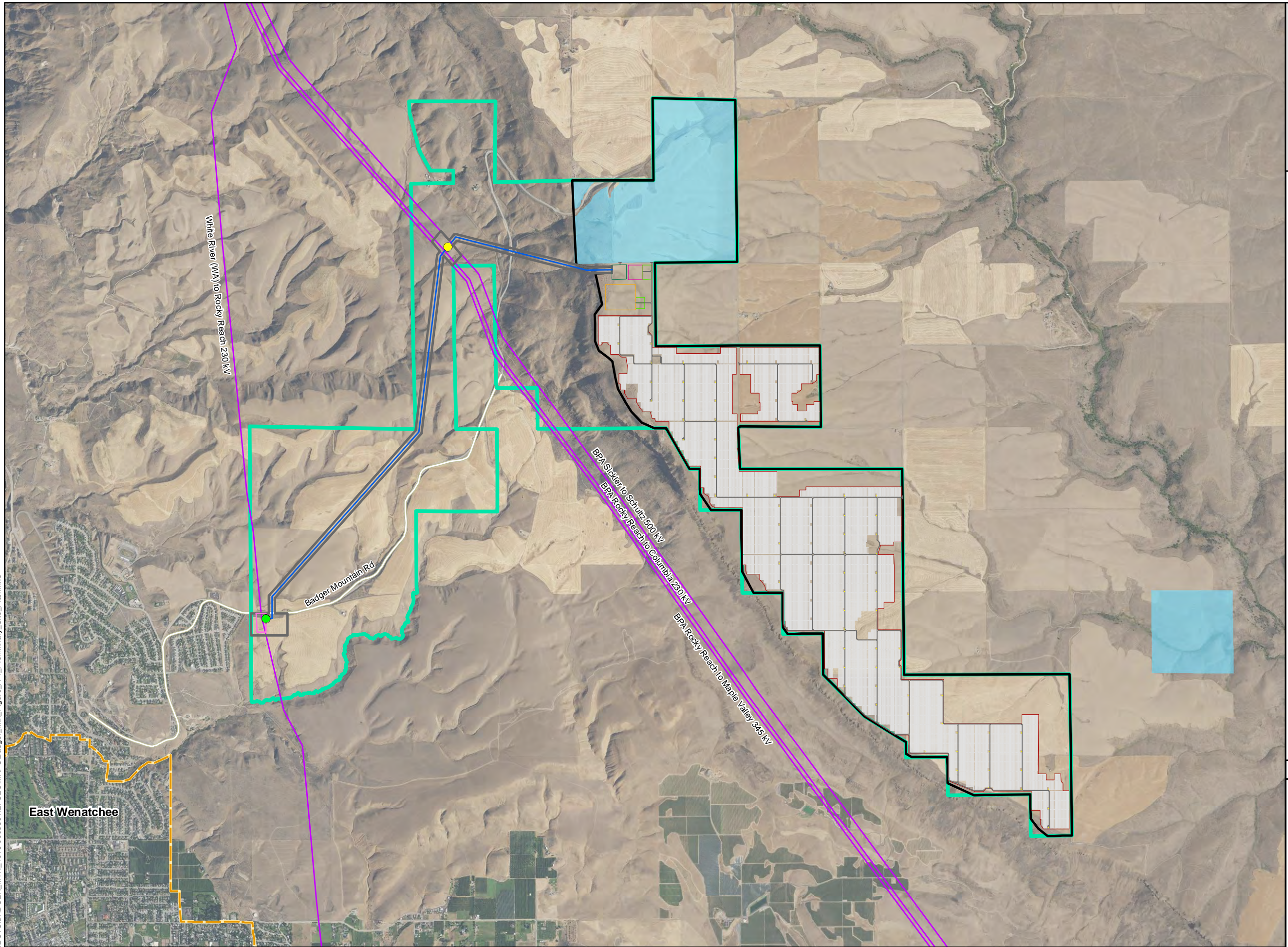


Badger Mountain Solar Energy Project

Figure A-1 Preliminary Site Plan

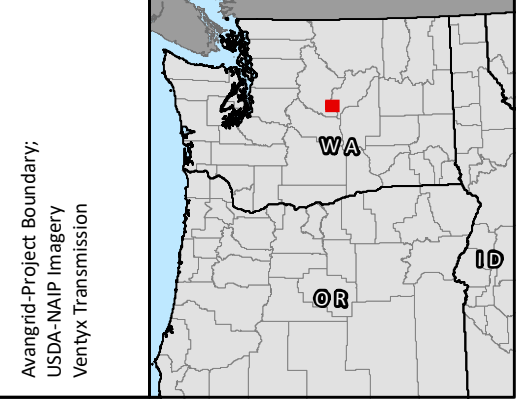
DOUGLAS COUNTY, WASHINGTON



- Project Lease Boundary (4,399 acres)
- Project Area (2,390 acres)
- Solar Array Micrositing Area (2,274 acres)
- Gen-tie Micrositing Corridor (116 acres)
- Option 1 Point of Interconnect
- Option 2 Point of Interconnect
- Proposed Project Components
- Solar Array
- Inverters
- Perimeter Fence
- Project Service Road
- O&M Building
- Collector Substation
- Battery Energy Storage System
- 230 kV Gen-tie Line
- Switchyard
- Temporary Staging Area
- Basemap Features
- Existing Transmission
- City Limits
- State Lands



Data Sources Reference Map



R:\PROJECTS\BADGER_MTN_1018-0008564\EFSECMAPS\Badger_Mtn_Figure_A-1_Preliminary_Site_Plan.mxd